

KIESEL

Mein Systempartner.

HITACHI

ZX300LCN-6 +DEMAREC DXS-50



Ref.-number: 0010518329
Construction year: 2019
Operating hours: 4430
Location: Baienfurt

Equipment:

mono boom
rear camera
a/c
600 mm shoes
3 m transport width
Demarec DXS-50 scrap shear

Worldwide delivery. Please ask for our low shipping charges.

Inquire now!
sales@kiesel.net

KIESEL

Mein Systempartner.

HITACHI

ZX300LCN-6 + DEMAREC DXS-50



View 1



View 2



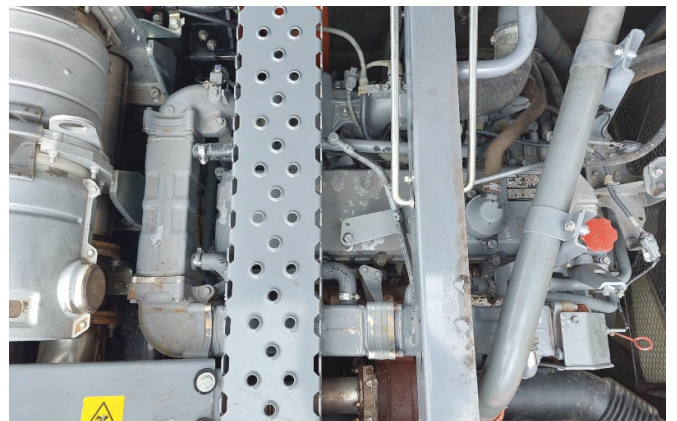
View 3



View 4



View 5



View 6

used-machine-datasheet-footer-line-1

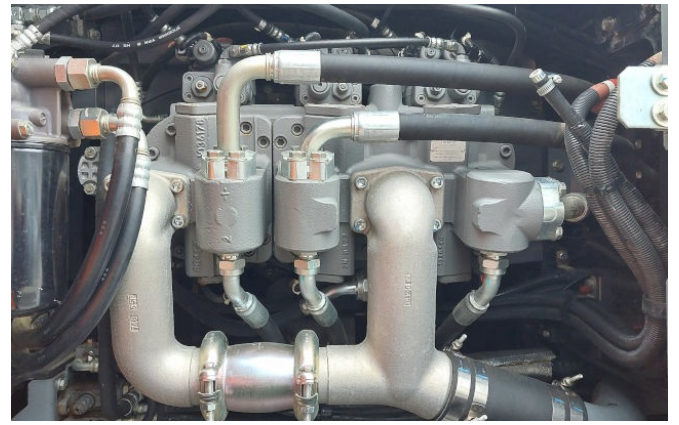
Offer subject to change, all prices exclude VAT, subject to prior sale. Subject to errors, changes, and misprints. The attachment shown may have additional equipment installed.

ISUZU MOTORS CONTROL INFORMATION
 ENGINE FAMILY: JSZXLO7.8QXA | MADE IN JAPAN
 ENGINE CODE : 6HK1XDQAB-02 | ADVERTISED HORSE POWER
 MODEL : AQ-6HK1X | SAE NET (FAN DISENGAGED)
 POWER CATEGORY : 130skW≤560 | 197.0 kW / 1900 RPM
 ENGINE DISPLACEMENT: 7.790 Liters | FUEL RATE : 144.2 mm³/s.t.
 ULTRA LOW SULFUR FUEL ONLY. | VALVE LASH (COLD)
 DELEGATED ASSEMBLY: | IN/EXH : 0.4/0.4 mm
 EXHAUST EMISSION CONTROL SYSTEM | CURB IDLE : 900 RPM
 : ECM, TC, CAC, DF I, EGR, DOC, SCR-U, AMOX

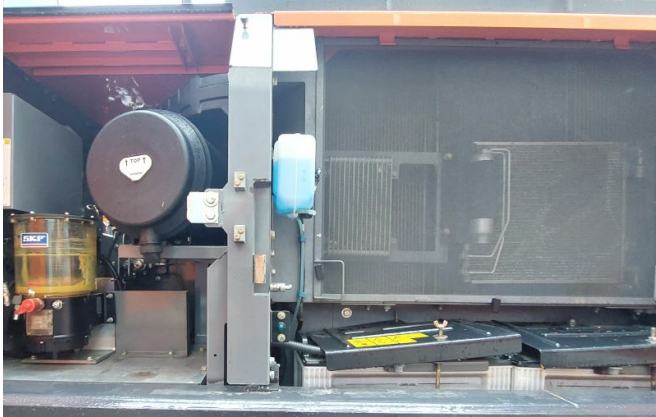
THIS ENGINE COMPLIES WITH U.S. EPA REGULATIONS FOR 2018MY
 NONROAD DIESEL ENGINES AND CALIFORNIA REGULATIONS FOR 2018MY
 OFF-ROAD CI ENGINES. MODEL SPECIFICATIONS: SEE SERVICE MANUAL

THIS ENGINE IS CONFORMED 97/68/EC DIRECTIVE
 ENGINE FAMILY: 6HK1XDOA | DATE OF MANUFACTURE: 05/18
 ENGINE TYPE : 6HK1XDOAB | ENGINE ID NUMBER: 6HK1-917420
 TYPE APPROVAL NUMBER: e4*97/680A*2012/46*0348*01 186*E02

View 7



View 8



View 9



View 10



View 11



View 12



View 13



View 14



View 15

**WIR
KAUFEN
IHRE**

BAUMASCHINEN
UMSCHLAGMASCHINEN
ANBAUGERÄTE

UND JEDE ART VON ZUBEHÖR!

✓ Jede Marke
✓ Jedes Baujahr
✓ Jeder Zustand

Ankauf@kiesel.net
T. 0152 57 95 89 96

View 16