

KIESEL

Mein Systempartner.

HITACHI

KTEG KMC350-5

KIESEL



Ref.-number: 0010514189
Construction year: 2015
Operating hours: 5740
Location: Baienfurt

Equipment:

22m lattice boom, separable
hydraulic boom change system QuickConnect
hydraulic adjustable u/c
hydraulic tilting cab
cab guards
a/c
rear camera
additional rear weight
600mm shoes

Worldwide delivery. Please ask for our low shipping costs.

Inquire now!
sales@kiesel.net

KIESEL

Mein Systempartner.

HITACHI

KTEG KMC350-5



View 1



View 2



View 3



View 4



View 5



View 6

used-machine-datasheet-footer-line-1

Offer subject to change, all prices exclude VAT, subject to prior sale. Subject to errors, changes, and misprints.
The attachment shown may have additional equipment installed.

ISUZU MOTORS LTD. MADE IN JAPAN

| | |
|------------------------------------|---------------------------------------|
| ENGINE FAMILY: DSZXL07.8LXA | ADVERTISED HORSE POWER |
| ENGINE CODE: 6HK1XDLAA-01 | SAE NET (FAN DISENGAGED) |
| MODEL: AL-6HK1X | 210.0 kW / 1900 RPM |
| POWER CATEGORY: 130≤kW<560 | FUEL RATE: 159.2 mm ³ /st. |
| NOx STANDARD: 2.0 g/kWh | VALVE LASH (COLD): |
| PM STANDARD: 0.02g/kWh | IN/EXH: 0.4/0.4 mm |
| ENGINE DISPLACEMENT: 7.790 Liters | CURB IDLE: 900 RPM |
| EXHAUST EMISSION CONTROL SYSTEM | ULTRA LOW SULFUR FUEL ONLY. |
| : ECM, TC, CAC, DFI, EGR, OC, PTOX | DELEGATED ASSEMBLY. |

THIS ENGINE COMPLIES WITH U.S. EPA REGULATIONS FOR 2013MY NONROAD DIESEL ENGINES AND CALIFORNIA REGULATIONS FOR 2013MY OFF-ROAD CI ENGINES. MODEL SPECIFICATIONS: SEE SERVICE MANUAL.

THIS ENGINE IS CONFORMED 97/68/EC DIRECTIVE.

| | |
|--|-------------------------------|
| ENGINE FAMILY: 6HK1XDLA | DATE OF MANUFACTURE: 09/13 |
| ENGINE TYPE: 6HK1XDLAA | ENGINE ID NUMBER: 6HK1-580936 |
| TYPE APPROVAL NUMBER: e4197/68LA*2010/2610273*00 | 136H-B01 |

View 7



View 8



View 9



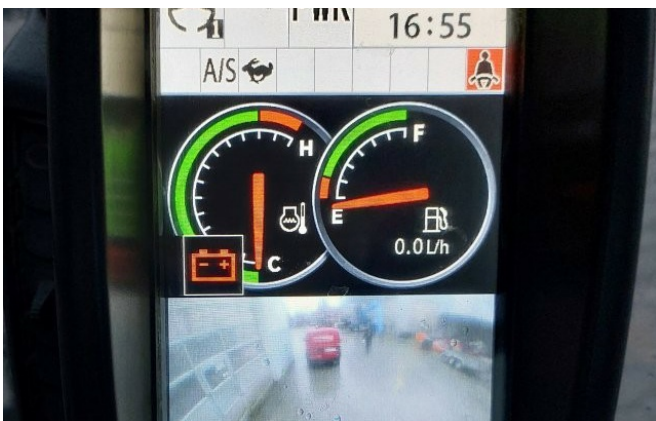
View 10



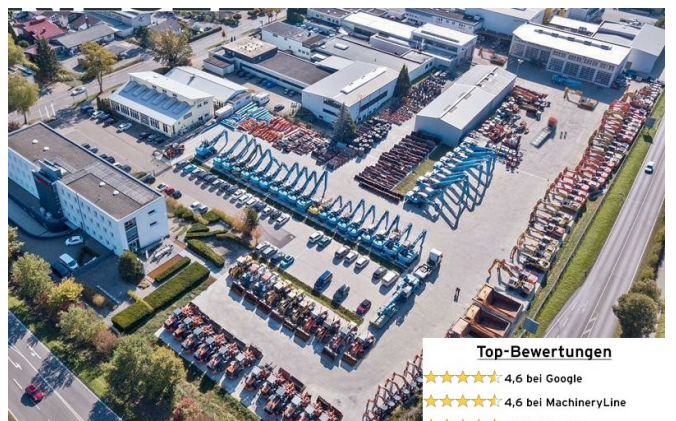
View 11



View 12



View 13



View 14