

# KIESEL

Mein Systempartner.

**HITACHI**

**KTEG KMC500S-6**



**Ref.-number:** 6680518110  
**Construction year:** 2021  
**Operating hours:** 395  
**Location:** Stockstadt am Rhein

**Equipment:**

demo machine  
27 m demolition boom  
KTEG standard quick connect system 125  
(hydraulic connecting bolts, mechanical connecting of hydraulic pipes)  
hydraulic tilting cab  
a/c  
rear camera  
water sprayer  
side protection  
hydraulic adjustable u/c  
600 mm shoes

Worldwide delivery. Please ask for our low shipping charges.

**Inquire now!**  
**[sales@kiesel.net](mailto:sales@kiesel.net)**

# KIESEL

Mein Systempartner.

**HITACHI**

**KTEG KMC500S-6**



View 1



View 2



View 3



View 4



View 5



View 6

ISUZU MOTORS LTD. MADE IN JAPAN  
 ENGINE FAMILY: JSZXL09.80XA  
 ENGINE CODE : 6UZ1XDQAB-01  
 MODEL : AQ-6UZ1X  
 POWER CATEGORY : 130kw/560  
 ENGINE DISPLACEMENT: 9.839 Liters  
 ULTRA LOW SULFUR FUEL ONLY.  
 DELEGATED ASSEMBLY.  
 EXHAUST EMISSION CONTROL SYSTEM  
 : ECM, TC, CAC, DFI, EGR, DOC, SCR-U, AMOX

ADVERTISED HORSE POWER  
 SAE NET (FAN DIS-ENGAGED)  
 270.0 kW / 2000 RPM  
 FUEL RATE : 187.3 mm<sup>3</sup>/st.  
 VALVE LASH(COLD)  
 IN/EXH : 0.2/0.5 mm  
 CURB IDLE : 900 RPM

THIS ENGINE COMPLIES WITH U.S. EPA REGULATIONS FOR 2018MY  
 NONROAD DIESEL ENGINES AND CALIFORNIA REGULATIONS FOR 2018MY  
 OFF-ROAD CI ENGINES. MODEL SPECIFICATIONS-SEE SERVICE MANUAL.

THIS ENGINE IS CONFORMED 97/68/EC DIRECTIVE.

ENGINE FAMILY: 6UZ1XDQA | DATE OF MANUFACTURE: 04/'18  
 ENGINE TYPE : 6UZ1XDQAB | ENGINE ID NUMBER: 6UZ1-531161  
 TYPE APPROVAL NUMBER: e4\*97/68QA\*2012/46\*0349\*01 186UF01

View 7



View 8



View 9



View 10



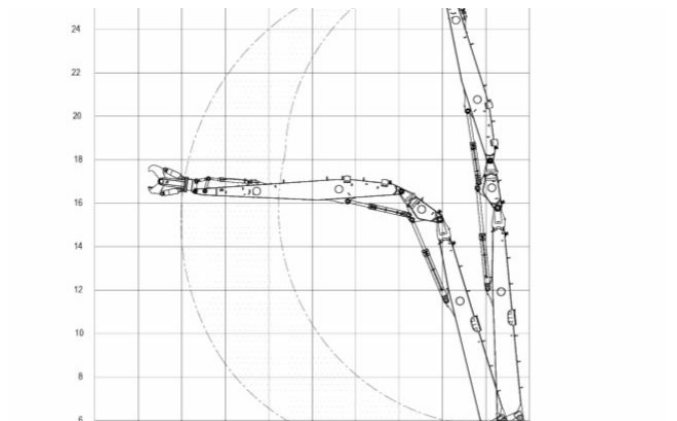
View 11



View 12



View 13



View 14



View 15