

KIESEL

Mein Systempartner.

HITACHI

ZX490LCH-6

KIESEL



Ref.-number: 0010519359

Construction year: 2019

Operating hours: 6510

Location: Landsberg

Equipment:

H mono boom 7000 mm

H stick 3400 mm

pipng for hammer

a/c

rear camera

central grease

600 mm shoes

without attachments

Worldwide delivery. Please ask for our low shipping costs.

Inquire now!

sales@kiesel.net

KIESEL

Mein Systempartner.

HITACHI

ZX490LCH-6



View 1



View 2



View 3



View 4



View 5

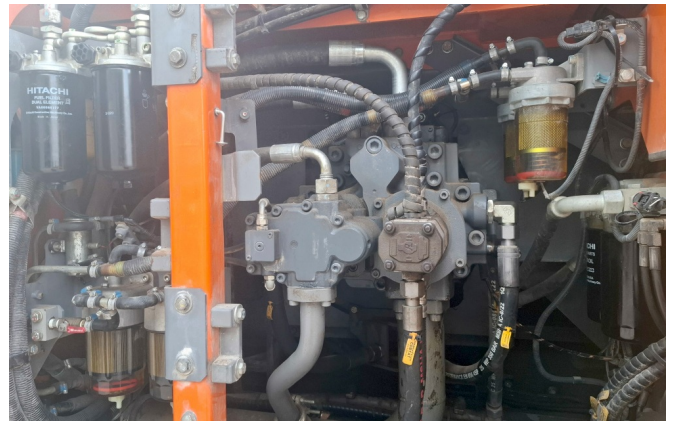


View 6

ISUZU MOTORS LTD. MADE IN JAPAN
 ENGINE FAMILY: JSZXL09.80XA | ADVERTISED HORSE POWER:
 ENGINE CODE : 6UZ1XDQAB-01 | SAE NET (FAN DISENGAGED)
 MODEL : AQ-6UZ1X | 270.0 kW / 2000 RPM
 POWER CATEGORY : 130&kw&560 | FUEL RATE : 187.3 mm³/st.
 ENGINE DISPLACEMENT: 9.839 Liters | VALVE LASH (COLD)
 ULTRA LOW SULFUR FUEL ONLY | IN/EXH : 0.2/0.5 mm
 DELEGATED ASSEMBLY | CURB IDLE : 900 RPM
 EXHAUST EMISSION CONTROL SYSTEM
 : ECM, TC, CAC, DFJ, EGR, DOC, SCR-U, AMOX

 THIS ENGINE COMPLIES WITH U.S. EPA REGULATIONS FOR 2018MY
 NONROAD DIESEL ENGINES AND CALIFORNIA REGULATIONS FOR 2018MY
 OFF-ROAD CI ENGINES. MODEL SPECIFICATIONS: SEE SERVICE MANUAL.
 THIS ENGINE IS CONFORMED 97/68/EC DIRECTIVE.
 ENGINE FAMILY: 6UZ1XDQA | DATE OF MANUFACTURE: 09/18
 ENGINE TYPE : 6UZ1XDQAB | ENGINE ID NUMBER: 6UZ1-532910
 TYPE APPROVAL NUMBER: e4197/680A12012/4610349101 | 186UF01

View 7



View 8



View 9



View 10



View 11



View 12



View 13



View 14

WIR KAUFEN IHRE

BAUMASCHINEN

UMSCHLAGMASCHINEN

ANBAUGERÄTE

UND JEDE ART VON ZUBEHÖR!



✉ Ankauf@kiesel.net
☎ T: 0152 57 95 89 96

- ✓ Jede Marke
- ✓ Jedes Baujahr
- ✓ Jeder Zustand



View 15