

KIESEL

Mein Systempartner.

HITACHI

ZX300LCN-6 +DEMAREC DXS-50



Ref.-number: 0010518329
Construction year: 2019
Operating hours: 4375
Location: Baienfurt

Equipment:

mono boom
rear camera
a/c
600 mm shoes
3 m transport width
Demarec DXS-50 scrap shear

Worldwide delivery. Please ask for our low shipping charges.

Inquire now!
sales@kiesel.net

KIESEL

Mein Systempartner.

HITACHI

ZX300LCN-6 + DEMAREC DXS-50



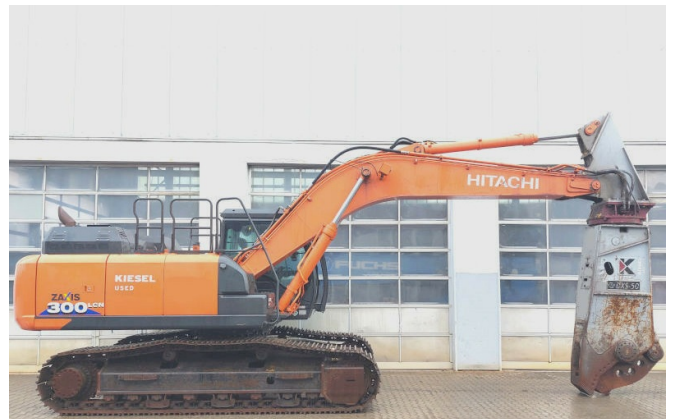
View 1



View 2



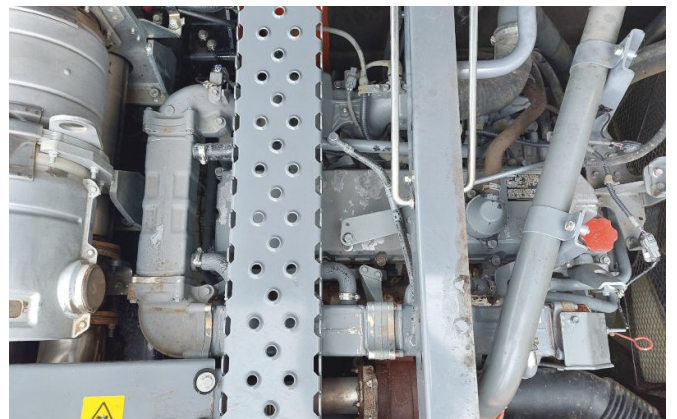
View 3



View 4



View 5



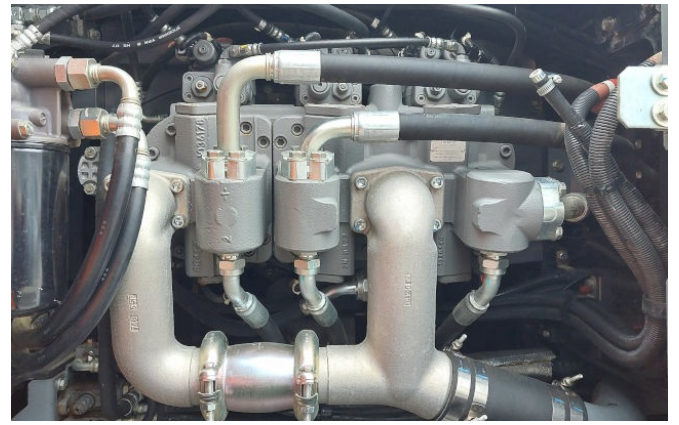
View 6

ISUZU MOTORS CONTROL INFORMATION
 ENGINE FAMILY: JSZXL07.80XA | MADE IN JAPAN
 ENGINE CODE : 6HK1XDQAB-02 | ADVERTISED HORSE POWER
 MODEL : AQ-6HK1X | SAE NET (FAN DISENGAGED)
 POWER CATEGORY : 130skW≤560 | 197.0 kW / 1900 RPM
 ENGINE DISPLACEMENT: 7.790 Liters | FUEL RATE : 144.2 mm³/s.t.
 ULTRA LOW SULFUR FUEL ONLY. | VALVE LASH (COLD)
 DELEGATED ASSEMBLY: | IN/EXH : 0.4/0.4 mm
 EXHAUST EMISSION CONTROL SYSTEM | CURB IDLE : 900 RPM
 : ECM, TC, CAC, DF I, EGR, DOC, SCR-U, AMOX

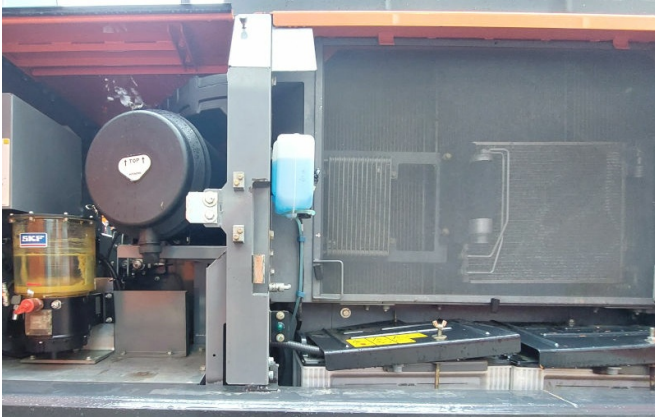
THIS ENGINE COMPLIES WITH U.S. EPA REGULATIONS FOR 2018MY
 NONROAD DIESEL ENGINES AND CALIFORNIA REGULATIONS FOR 2018MY
 OFF-ROAD CI ENGINES. MODEL SPECIFICATIONS: SEE SERVICE MANUAL

THIS ENGINE IS CONFORMED 97/68/EC DIRECTIVE
 ENGINE FAMILY: 6HK1XDOA | DATE OF MANUFACTURE: 05/18
 ENGINE TYPE : 6HK1XDQAB | ENGINE ID NUMBER: 6HK1-917420
 TYPE APPROVAL NUMBER: e4*97/680A*2012/46*0348*01 | 186*E02

View 7



View 8



View 9



View 10



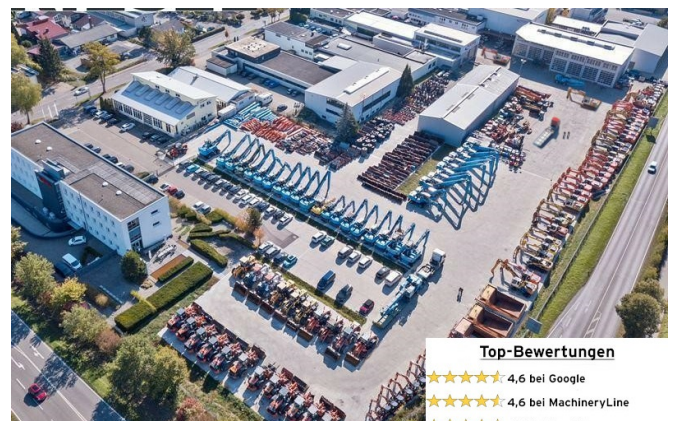
View 11



View 12



View 13



View 14

Top-Bewertungen
 ★★★★★ 4,6 bei Google
 ★★★★★ 4,6 bei MachineryLine
 ★★★★★ 4,6 bei Truckt

WIR KAUFEN IHRE

BAUMASCHINEN

UMSCHLAGMASCHINEN

ANBAUGERÄTE

UND JEDE ART VON ZUBEHÖR!



✉ Ankauf@kiesel.net
☎ T: 0152 57 95 89 96

- ✓ Jede Marke
- ✓ Jedes Baujahr
- ✓ Jeder Zustand



View 15