

KIESEL

Mein Systempartner.

HITACHI

KTEG KMC400-6

KIESEL



Ref.-number: 0010516084
Construction year: 2016
Operating hours: 7200
Location: Baienfurt

Equipment:

loading boom
hydraulic arm change system
3rd lift cylinder Kiesel Tri-Tec
hydraulic tilting cab
cab guards
a/c
rear camera
hydraulic adjustable u/c
600 mm shoes
Worldwide delivery. Please ask for our low shipping charges.

Inquire now!
sales@kiesel.net

KIESEL

Mein Systempartner.

HITACHI

KTEG KMC400-6



View 1



View 2



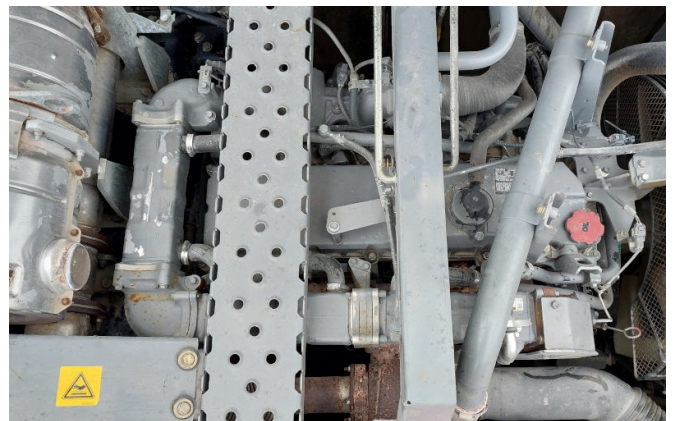
View 3



View 4



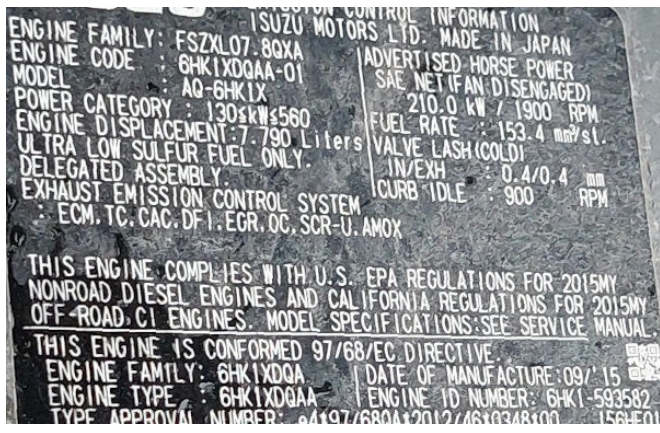
View 5



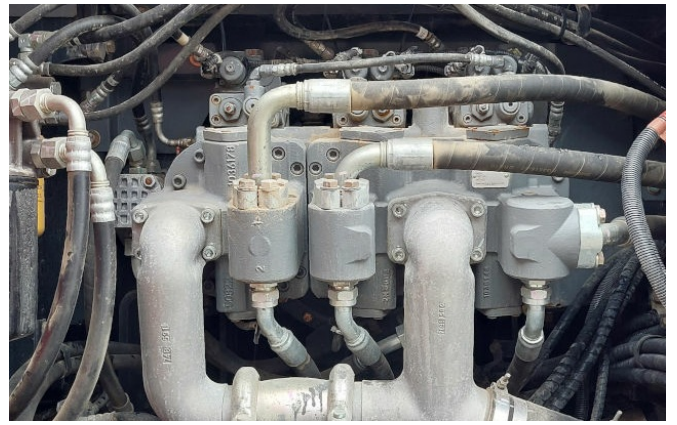
View 6

used-machine-datasheet-footer-line-1

Offer subject to change, all prices exclude VAT, subject to prior sale. Subject to errors, changes, and misprints. The attachment shown may have additional equipment installed.



View 7



View 8



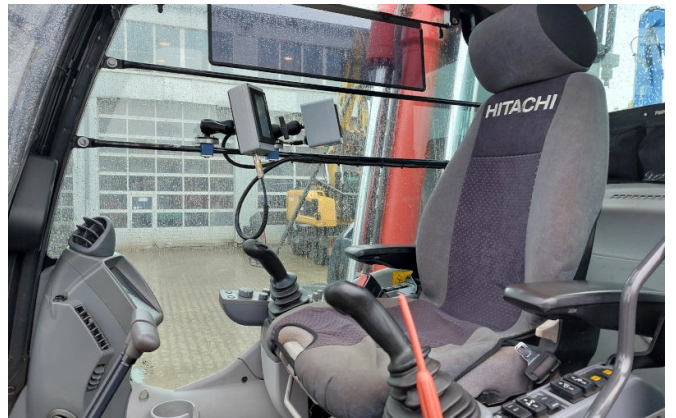
View 9



View 10



View 11



View 12



View 13



View 14



View 15