

KIESEL

Mein Systempartner.

ROCKWHEEL

MOUNTED TILLER D30, 0Q80



Ref.-number: Z585157
Construction year: 2022
Location: Stockstadt am Rhein

Technical data

Rockwheel, Attachable milling machine D30, 0Q80

Reference number: Z585157

Manufacturer: Rockwheel

Recording: 0Q80

Type: D30

Year of construction: 2022

For excavator class: 26-38 t

Weight: 1.444 kg

Working pressure: max. 400 bar

Oil volume: max.460 l/min

Chisel quantity: 60 pieces

Location: Stockstadt

Inquire now!

sales@kiesel.net

KIESEL

Mein Systempartner.

ROCKWHEEL

MOUNTED TILLER D30, 0Q80



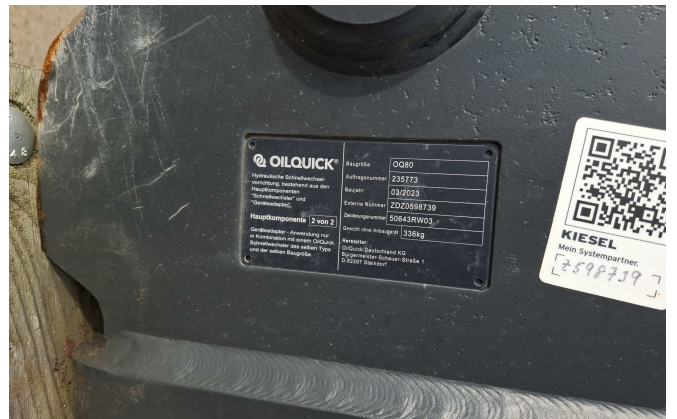
View 1



View 2



View 3



View 4



View 5



View 6