

KIESEL

Mein Systempartner.

ROCKWHEEL

MOUNTED TILLER D20, 0Q70-55



Ref.-number: Z588573
Construction year: 2021
Location: Stockstadt am Rhein

Technical data

Rockwheel, Attachment milling machine D20, 0Q70-55

Reference number: Z588573

Manufacturer: Rockwheel

Recording: 0Q70-55

Type: D20

Year of construction: 2021

For excavator class: 17-28 t

Weight: 1,170 kg

Working pressure: 210-250 bar

Oil volume: up to 320 l/min

Chisel quantity: 64 pieces

Location: Stockstadt

Inquire now!

sales@kiesel.net

KIESEL

Mein Systempartner.

ROCKWHEEL

MOUNTED TILLER D20, 0Q70-55



View 1



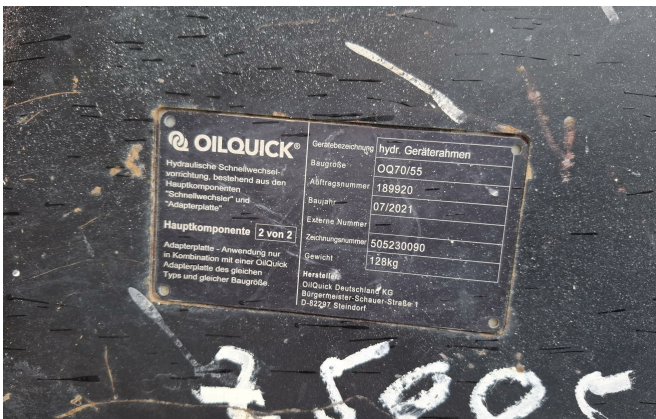
View 2



View 3



View 4



View 5