

KSW

ADAPTER FRAME MULTAVEX CAT 4-5, BB MULTAVEX CAT 4-5



Ref.-number: Z66580
Construction year: 2017
Location: Baienfurt

Technical data

KSW, Adapter frame, Drilling pattern Multavex CAT 4-5

Reference number: Z66580

Manufacturer: KSW

Drilling image: Multavex CAT 4-5

Type: 910x818x45

Drill holes: 16 pieces

Year of construction: 2017

Location: Baienfurt

Inquire now!

sales@kiesel.net

KIESEL

Mein Systempartner.

KSW

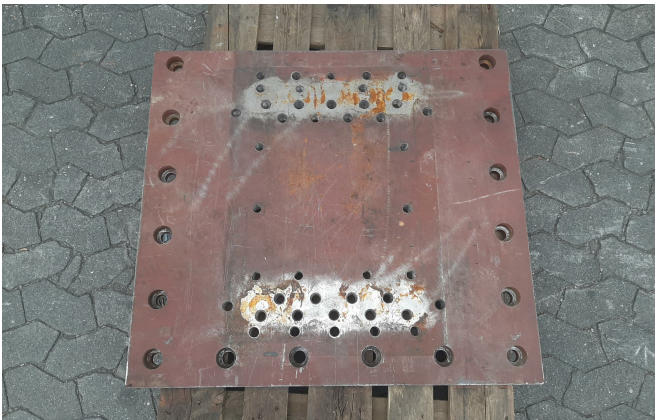
ADAPTER FRAME MULTAVEX CAT 4-5, BB MULTAVEX CAT 4-5



View 1



View 2



View 3