

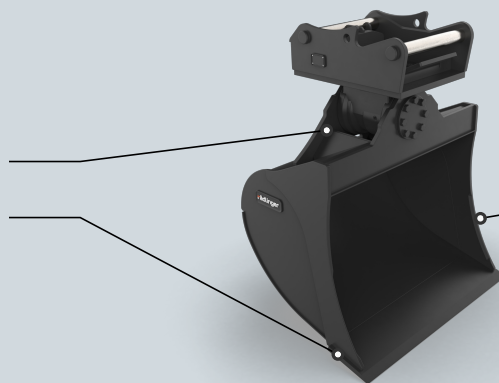


#### Schwenktiefelfel



Schwenkwinkel 2 x 45°

Messer in HB500



Verjüngung pro Seite 2,5°

#### Technische Daten

|                     | KTL15M-1000 | KTL15M-1200 | KTL15M-1400 | KTL15M-1600 |
|---------------------|-------------|-------------|-------------|-------------|
| Baggerdienstgewicht | 11 - 15 t   | 11 - 15 t   | 11 - 15 t   | 11 - 15 t   |
| cutting width       | 1.000 mm    | 1.200 mm    | 1.400 mm    | 1.600 mm    |
| Betriebsgewicht     | 660 kg      | 715 kg      | 770 kg      | 830 kg      |
| Inhalt              | 435 l       | 540 l       | 645 l       | 750 l       |

|                     | KTL19M-1000 | KTL19M-1200 | KTL19M-1400 | KTL19M-1600 |
|---------------------|-------------|-------------|-------------|-------------|
| Baggerdienstgewicht | 15 - 19 t   | 15 - 19 t   | 15 - 19 t   | 15 - 19 t   |
| cutting width       | 1.000 mm    | 1.200 mm    | 1.400 mm    | 1.600 mm    |
| Betriebsgewicht     | 836 kg      | 895 kg      | 955 kg      | 1.014 kg    |
| Inhalt              | 560 l       | 680 l       | 800 l       | 920 l       |

|                     | KTL23M-1200 | KTL23M-1400 | KTL23M-1600 |
|---------------------|-------------|-------------|-------------|
| Baggerdienstgewicht | 19 - 23 t   | 19 - 23 t   | 19 - 23 t   |
| cutting width       | 1.200 mm    | 1.400 mm    | 1.600 mm    |
| Betriebsgewicht     | 1.091 kg    | 1.173 kg    | 1.254 kg    |
| Inhalt              | 840 l       | 990 l       | 1.140 l     |

|                     | KTL26M-1400 | KTL26M-1600 | KTL26M-1800 | KTL26M-2000 |
|---------------------|-------------|-------------|-------------|-------------|
| Baggerdienstgewicht | 23 - 26 t   | 23 - 26 t   | 23 - 26 t   | 23 - 26 t   |
| cutting width       | 1.400 mm    | 1.600 mm    | 1.800 mm    | 2.000 mm    |
| Betriebsgewicht     | 1.315 kg    | 1.366 kg    | 1.418 kg    | 1.470 kg    |
| Inhalt              | 1.250 l     | 1.450 l     | 1.650 l     | 1.850 l     |

|                     | <b>KTL28M-1400</b> | <b>KTL28M-1600</b> | <b>KTL28M-1800</b> | <b>KTL28M-2000</b> |
|---------------------|--------------------|--------------------|--------------------|--------------------|
| Baggerdienstgewicht | 23 - 28 t          | 23 - 28 t          | 23 - 28 t          | 23 - 28 t          |
| cutting width       | 1.400 mm           | 1.600 mm           | 1.800 mm           | 2.000 mm           |
| Betriebsgewicht     | 1.572 kg           | 1.632 kg           | 1.691 kg           | 1.751 kg           |
| Inhalt              | 1.420 l            | 1.630 l            | 1.850 l            | 2.080 l            |

|                     | <b>KTL35M-1400</b> | <b>KTL35M-1600</b> | <b>KTL35M-1800</b> | <b>KTL35M-2000</b> |
|---------------------|--------------------|--------------------|--------------------|--------------------|
| Baggerdienstgewicht | 29 - 40 t          | 29 - 40 t          | 29 - 40 t          | 29 - 40 t          |
| cutting width       | 1.400 mm           | 1.600 mm           | 1.800 mm           | 2.000 mm           |
| Betriebsgewicht     | 2.365 kg           | 2.500 kg           | 2.635 kg           | 2.770 kg           |
| Inhalt              | 1.700 l            | 2.000 l            | 2.300 l            | 2.600 l            |