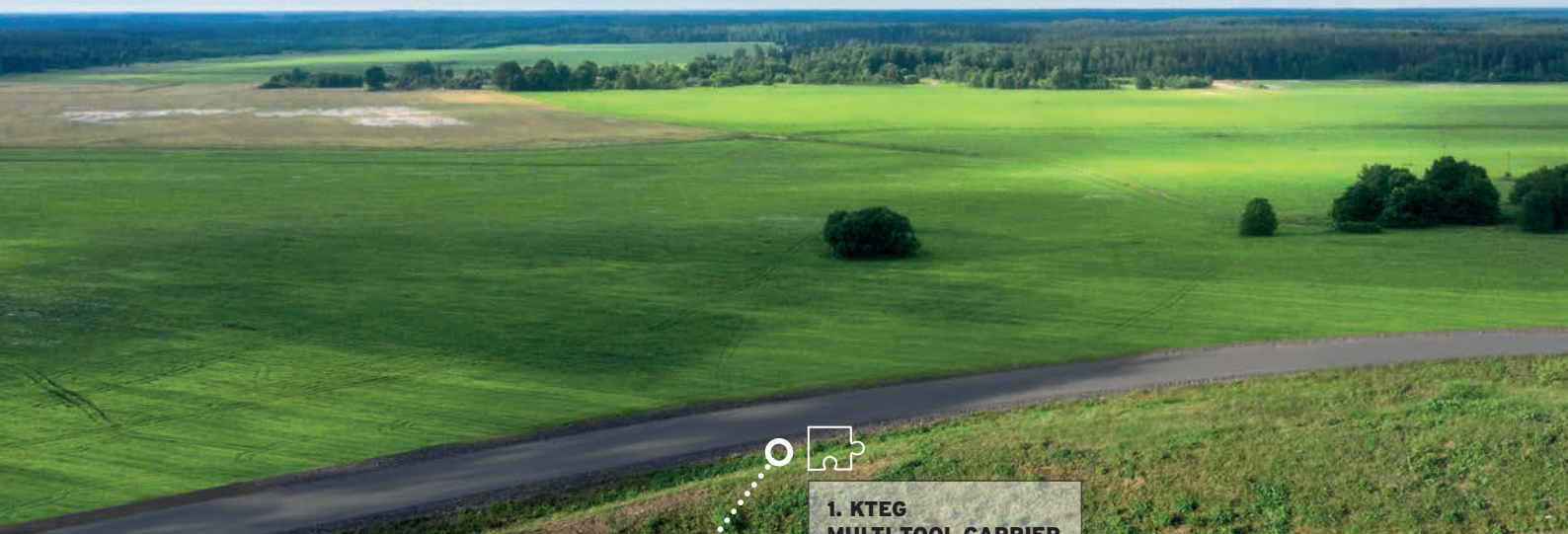




Powered by Hitachi Construction Machinery



**1. KTEG  
MULTI TOOL CARRIER**



**2. KTEG  
DIGITAL  
ASSISTANCE  
SYSTEMS**



**3. KTEG  
QUICK-COUPLER  
SYSTEMS**



**4. KTEG  
ATTACHMENTS**

# KTEG P-LINE

System

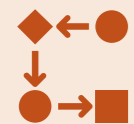
# The challenges facing the construction industry

Across the construction industry, companies face common challenges - challenges that affect efficiency, safety and profitability. Acute staff shortages, the need for a skilled workforce, workplace safety, rising labour costs and high process costs are key issues shaping the industry.



## PERSONNEL SHORTAGES

The construction industry is facing acute shortages of both skilled and unskilled workers. This makes it increasingly difficult for companies to complete projects efficiently and on time. Finding qualified personnel is becoming an ever-greater challenge, and one that negatively impacts both productivity and competitiveness.



## PROCESS COSTS

Waiting times, set-up and conversion times, as well as the costs of surveying and documentation all put a strain on project budgets. A working hour that effectively amounts to two man-hours highlights the need for more efficient processes.



## PERSONNEL COSTS

Rising labour costs are placing a growing strain on the construction industry. Higher wages and social security contributions add to the financial pressure on companies that often work with slim profit margins, making it essential to control and optimise these costs.



## SITE SAFETY

Of all the challenges facing the industry, site safety is rightly the top priority. Work carried out in hazardous areas carries significant risks that must be reduced to a minimum. Safeguarding employees is both a legal requirement and a fundamental duty for every employer.



## STAFF QUALIFICATIONS AND NEW TALENT

Staff qualifications - supported by essential training and ongoing development - are vital to success on site. Long induction periods, however, cause delays and drive up costs. Comprehensive training is key to meeting the demands of modern construction projects.



## EMPLOYEE HEALTH AND WELLBEING

Complex projects and physically demanding work take a toll on the health of site workers. Additional stress factors, such as time and cost pressures, further exacerbate the problem. Measures to protect and maintain employees' health are becoming increasingly important.



## SURVEYING / DOCUMENTATION

Projects are generally not billed or settled until all required documentation and proof of completion have been submitted. This delay has a negative impact on companies' liquidity. In addition, external surveyors are costly and not always readily available.



## DIGITALIZATION

Documentation, data capture and networking with other companies play a vital role in modern construction projects. Entering data manually and then transferring it into digital systems is both time-consuming and labour-intensive. With information processing now increasingly fully digital, all stages - from data capture to processing - should be automated, and systems must be fully compatible with other interfaces.



## BUILDING REGULATIONS AND STANDARDS

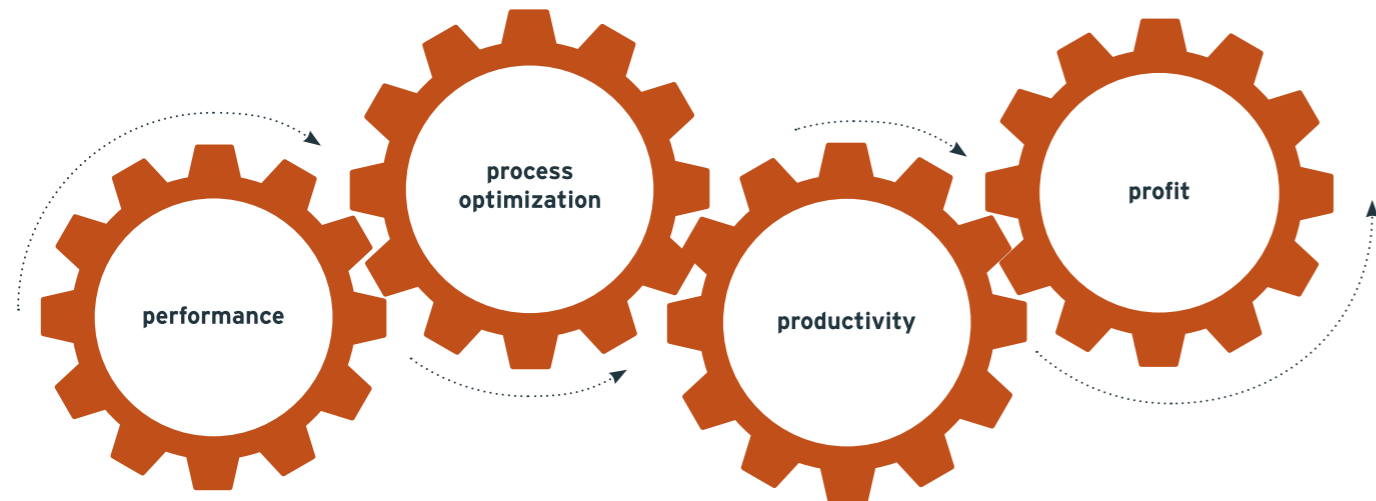
From general building codes to overarching (national and international) legislation, companies face an ever-growing list of requirements to demonstrate compliance and implement regulations. Fulfilling these obligations ties up both capital and manpower.



## "IDLE" COSTS

Costs that are ever-present but often overlooked, having become accepted as unavoidable - such as waiting times, set-up times, changeover times, repair costs and auxiliary equipment, etc.

# Boost profit automatically by investing in performance



Investing in performance ... → ... lets you optimise on-site processes ... → ... increase productivity ... → ... boost profits ... and reduce process and "idle" costs.

**Invest in machinery to mechanise your site:** Carry out more tasks with an excavator instead of by hand.

**Accelerating and streamlining processes and workflows**  
Mechanisation automatically leads to process optimisation:

**Boost productivity and optimise processes at the same time**  
Excavator operations that reduce fatigue and are less physically demanding.

**Increase revenue through higher productivity and effective cost reduction** Get more work done in less time with components designed for reliable use

**Invest in KTEG 360° attachments:**  
Significantly more powerful than hand tools.

- At least 30% lower process costs

- Up to 100% higher productivity

- Up to 10x faster processes thanks to mechanised workflows

**Invest in the fully hydraulic KTEG OQR rotary coupler:**  
Fast, easy changes are the key to ensuring operators actually make use of attachments.

- Minimise manual processes
- Reduce staffing requirements

- Efficient use of personnel
- Easy operation, supported by assistance systems

- Correct use of attachments reduces wear and repair costs

**Invest in the KTEG Multi Tool Carrier:**  
All necessary lines and components for every attachment are pre-installed.

- Higher machine utilisation
- Savings on standby equipment such as compact wheel loaders

- Open platform: allows integration of additional applications at any time

- Properly equipped machinery and transport solutions save time and money during daily site preparation and setup

## Daily site setup costs - example calculation

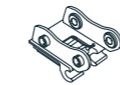
Calculation basis: €1,000 investment = €1 per day  
5 years (depreciation) x 10 months/year x 20 working days/month

Construction labour rate: €50 per working hour

### STANDARD



5.5 t excavator



Hydraulic quick coupler



Attachments

100 euros per day



Driver

400 euros per day



Specialist

400 euros per day

Approx. 90% of deployment costs are labour costs

### KTEG P-LINE SYSTEM



ZX55U-6 MTC



KTEG OQR



KTEG 360° attachments

Additional investment: approx. 5 euros

Additional investment: approx. 10 euros

Additional investment: approx. 85 euros

200 euros per day



Driver

Higher utilisation and productivity

400 euros per day



Specialist

Reduced workload, optimised deployment

400 euros per day

Approx. 80-85% of deployment costs are labour costs

### SETUP COSTS:

#### STANDARD SITE

900 euros per day

110 euros per hour

27 euros per 15 min

1.8 euros per minute

**KTEG P-Line System**  
Additional investment = 10% per day

### SETUP COSTS:

#### KTEG P-LINE SITE

1,000 euros per day

120 euros per hour

30 euros per 15 min

2 euros per minute

### PROCESS OPTIMISATION WITH KTEG P-LINE

Changing attachments

15 minutes  
27 euros

10x faster

1 minute  
2 euros

Manhole 1 m³ / service connection

2 hours  
220 euros

At least 50% faster processes and time savings = increased revenue

55 minutes  
110 euros

Backfilling and compacting a 10 m trench

5 hours  
550 euros

2 hours  
240 euros

Trench / excavation

1 hour  
110 euros

More economical than an hour of manual labour

10 minutes  
20 euros

# The KTEG P-Line system

The KTEG P-Line system combines all key components in one integrated package. Every system element is perfectly matched and fully plug-and-play compatible. This ensures that all applications and processes can be carried out quickly and safely, allowing the carrier machine to deliver its full performance. Thanks to its safe and straightforward operation, the system runs without interruptions, delivering optimum utilisation and a high workload capacity.

The system integration has been carefully planned to take all relevant parameters into account:

- The attachments' power requirements are matched to the carrier machine's hydraulic output
- The attachments' size and operating weight are matched to the carrier machine's load capacity and stability
- Minimal risk of damage - no hydraulic lines in the working area
- Maximum user safety thanks to operator assistance systems

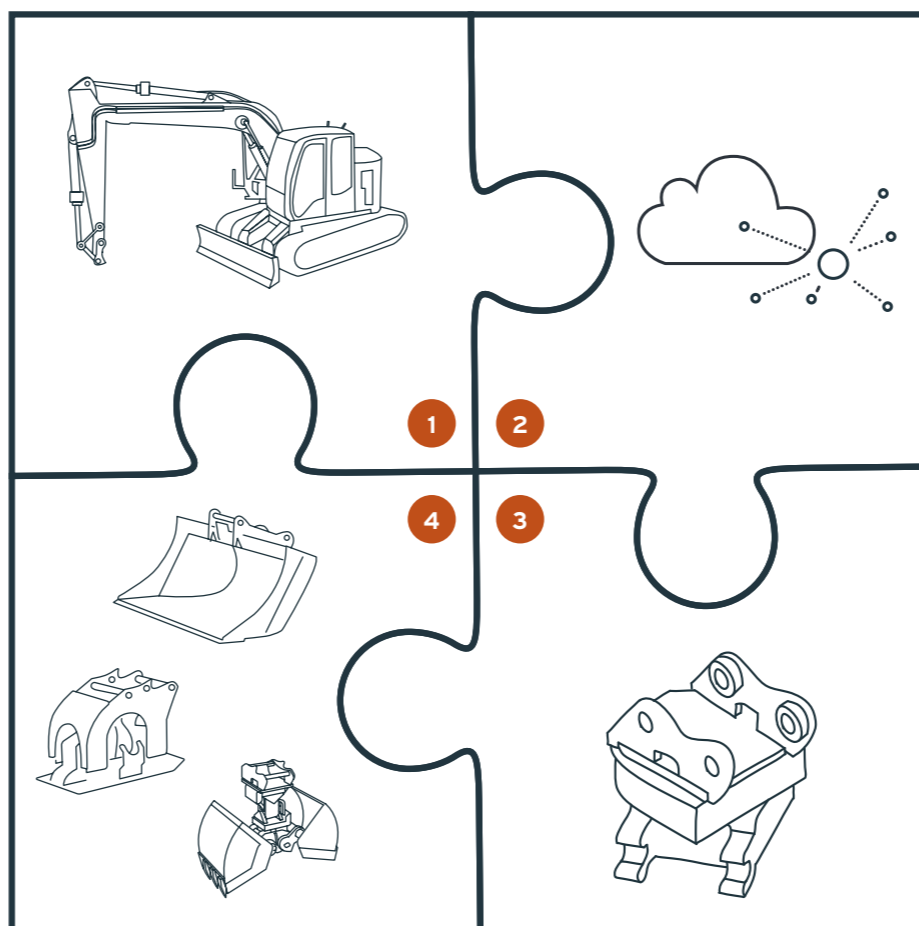
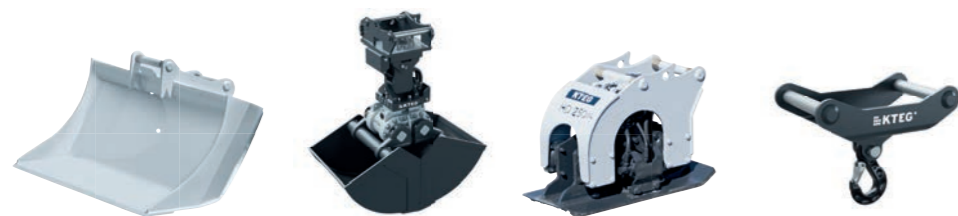
## HITACHI/KTEG MTC MULTI TOOL CARRIER

The ideal multi tool carrier - fully equipped with all the features and functions you need as standard:

- Complete hydraulic pipework
- Electrical installations and cabling
- Leaking oil/tank lines for high-performance attachments (e.g. suction box, attachable compactors, milling machines)
- Incorrect operation is prevented via automatic adjustment of the operating mode (release valve or ZAXIS Smart Control)

## KTEG 360° ATTACHMENTS

All KTEG attachments are optimised for the 360° system and matched in size and performance to the multi tool carrier. All supply lines are fully integrated, making KTEG 360° attachments safe to use and ready for immediate operation.



## KTEG COPILOT PROFESSIONAL

Provides both active and passive support for the operator, making control easier during every task, including complex applications:

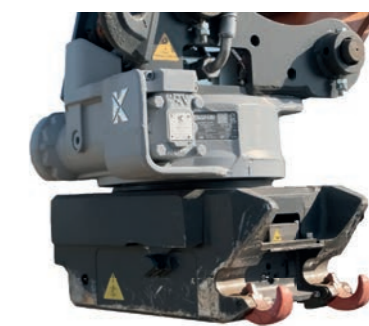
- Fencing / work area monitoring
- 2D Grade Assist / levelling assistant
- Spirit level
- Attachment management



## KTEG OQR - FULLY HYDRAULIC QUICK COUPLER WITH ROTATION

The heart of the KTEG P-Line system: fully hydraulic attachment changes in just 10 seconds, with no additional assistance required. All attachments can be freely rotated through 360°.

- Greater flexibility and reach
- Expanded range of applications on any construction site
- Maximum safety and comfort





# 1. HITACHI/KTEG MTC The Multi Tool Carrier

The HITACHI / KTEG MTC Multi Tool Carrier is a fully equipped tool carrier designed for efficiency, versatility and productivity. All required functions are pre-installed and configured to work seamlessly with the fully hydraulic rotary quick coupler

and digital assistance systems, enabling tasks to be completed faster, more safely and more efficiently.

## SIDE-BOOM VERSION

A side-boom version is available for selected models, offering higher lifting capacity and better all-round visibility than the swing-boom variant.

## COMPLETE PIPEWORK INSTALLED

With optimal hose routing for all hydraulic functions of the attachments, including a dedicated leaking oil line.



## AUTOMATIC OPERATING MODE

The pressure-free mode is activated automatically, eliminating the risk of incorrect operation when using equipment such as hydraulic breakers or compactor attachments.

## HIGH-QUALITY EXCAVATOR

The "Made in Japan" quality seal guarantees an exceptionally low failure rate. The machine delivers consistent performance, reflected in its low operating costs and maximum availability.

## RESPONSIVE EXCAVATOR CONTROLS

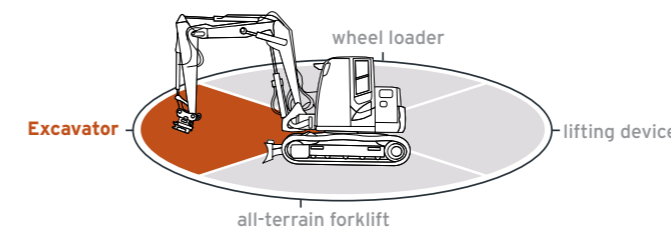
HITACHI mini excavators feature the most responsive controls in the industry - simple, intuitive and with no loss of performance during simultaneous movements, ensuring maximum productivity.

## TRANSPORT-FRIENDLY COMPACT DESIGN

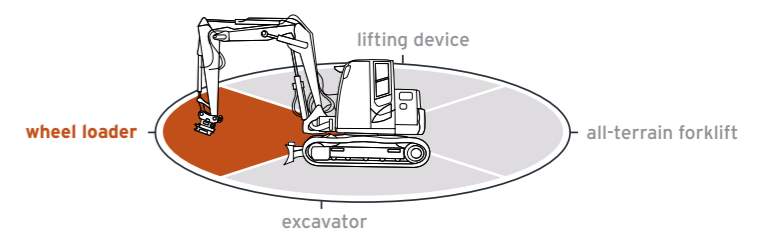
The compact design allows for easy transport and efficient operation in confined spaces.

The HITACHI / KTEG MTC Multi Tool Carrier combines the versatility of several machines in one. With all functions installed as standard and every attachment ready for use within seconds - and rotatable through 360° - the KTEG MTC offers the following functionality as standard:

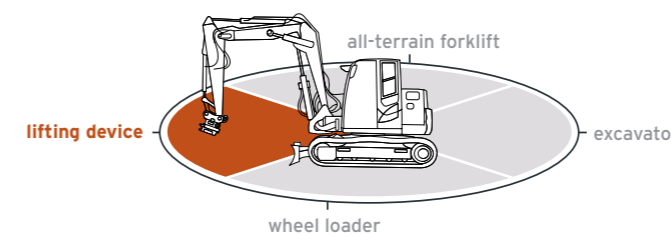
- 360° excavator
- 360° loader
- 360° lifting device
- 360° rough-terrain forklift



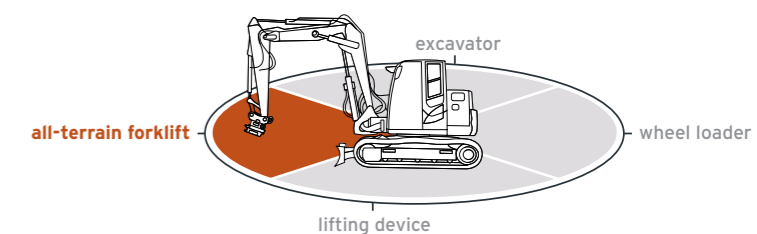
360° digging and trenching - to the left, right and in front-shovel mode. With no loss of power, thanks to the low-profile design of both the KTEG OQR and the KTEG bucket. The rotation function offers nearly the same capabilities as a swing motor or tiltrotator: sloped surfaces and angled walls can be handled with ease.



Loading, levelling and backfilling in tight spaces: a KTEG Multi Tool Carrier can handle virtually all these tasks on site more efficiently than a compact wheel loader, as it requires no manoeuvring space. Crawler excavators are also better suited to rough terrain than compact wheel loaders.



The KTEG P-Line system offers the safest lifting solution: load hooks are centrally located beneath the rotator, ensuring they are always clearly visible to the operator. The KTEG OQR also allows the load hook to rotate, enabling precise load positioning and improved stabilisation.



Whether for 360° loading and unloading of transport vehicles or repositioning materials on site, a KTEG MTC handles challenging terrain with ease - even placing pallets over obstacles when needed.



## 2. KTEG Assistance Systems

### KTEG COPILOT

Our digital assistance systems take a comprehensive approach to communication. Every design decision starts with an assessment of the overall process: how can it be optimised to make day-to-day tasks easier for management, operators and everyone involved? (From the ZX135 series onwards; optional for mini and compact models).



#### OILQUICK CONTROL

Control unit for the OilQuick quick coupler



#### TOOL RECOGNITION AND MANAGEMENT

Automatic detection of the connected attachment



#### OPERATOR ASSISTANCE

Fencing, OQR Level, Dynamic Scale, Grade Assist

### TOOL TRACKER

#### YOUR BENEFITS

##### Precise location

By using GNSS and mobile network triangulation, the ToolTracker can be located with pinpoint accuracy.

##### Movement tracking

In addition to its current location, you can view its movement history over previous weeks and months, giving you full transparency with regard to your attachment's whereabouts.

##### Attachment usage analysis

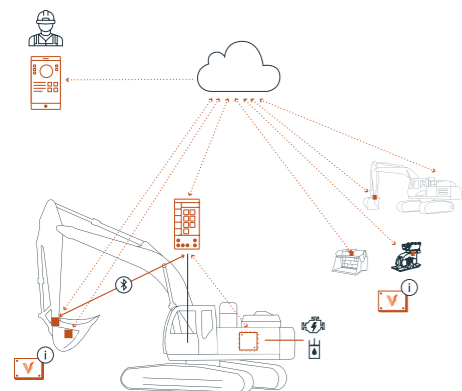
By recording and analysing movement data, utilisation of attachments can be evaluated quickly and efficiently.

##### Compatible with mobile devices

Effortless on-site operation - access and update the ToolTracker directly from your smartphone.



### OPEN TELEMATICS SYSTEM



#### YOUR BENEFITS

Information is available in real time

One interface for the machine and attachments

Seamless integration into your systems

Overview of all your devices

### KTEG AUTODOKU

KTEG AutoDoku is revolutionising construction site documentation through precise laser scanning technology. Survey data is captured automatically, enabling efficient compliance with



regulatory requirements - without the need for additional specialist personnel. Cloud-based storage enables location-independent access and seamless collaboration, resulting in transparent, real-time digital construction documentation.

#### YOUR BENEFITS

Time and cost savings during operations thanks to digital documentation

Real-time display of documentation in the cloud

Photographic documentation of the construction project

Documentation of utilities to be installed

Position and height recording of installed utilities

Georeferenced tracking of construction progress

Shift-based recording of the project's status

Real-time measurement of earthworks volumes

Detailed recording of terrain profiles

### LEICA 3D READY

#### 1. KTEG COPILOT PROFESSIONAL

##### Basis for the 3D system

includes:

Sensors ✓

#### 2. 3D-VORBEREITUNG

##### Upgrade "Leica 3D ready"

includes:

Masts ✓

Docking Station ✓

Mounting ✓

Cabling ✓

#### 3. 3D-SYSTEM

##### Upgrade "Leica 3D"

includes the following Plug & Play components:



#### YOUR BENEFITS

##### Compatibility

The controls are compatible with common data formats and base stations

##### Intuitive operation

Easy-to-learn system with simple graphical display

##### Enhanced safety

Integration of safety assistance systems for greater safety on site

##### Increases your productivity by up to 50%

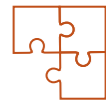
With reduced material and staffing requirements, as well as minimised downtime

##### Boost efficiency

Save time, utilise cloud services, increase precision

##### Innovative technologies

Technologies tailored to your needs



# 3. KTEG OQR - fully hydraulic rotary quick coupler

With the fully hydraulic KTEG OQR (OilQuick Rotation) rotary quick coupler, the carrier machine becomes a true multi tool carrier. The 10-second 360° system allows all attachments to be changed quickly, easily and safely. This not only enables tasks to be completed more efficiently but can even replace multiple machines on site.

The KTEG OQR is both the foundation and the key to accelerating site processes and mechanising manual workflows. The combination of the HITACHI / KTEG Multi Tool Carrier and KTEG

OQR is an essential tool for modern companies aiming to work in a future-proof and competitive way.

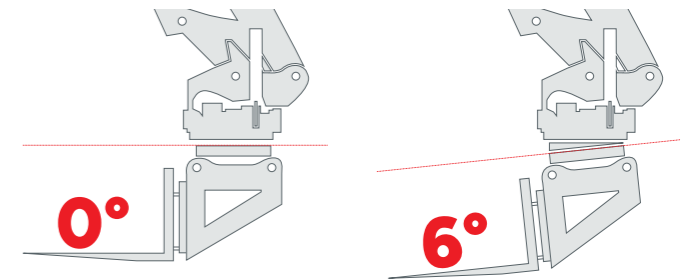
The fully hydraulic KTEG OQR rotary quick coupler represents the fourth generation in the evolution of quick-coupler systems, offering new applications and functionalities that were not possible with earlier designs.

### ONLY €1 PER ATTACHMENT CHANGE

Fully hydraulic changes are carried out quickly and easily at the touch of a button from inside the cab - no additional personnel required.

### ZERO DEGREE - 0° ROTATION PLANE

Prevents attachments from "wobbling", reducing the risk of accidents and improving site safety.



### OPERATION WITHOUT LOSS OF PERFORMANCE

With its compact and robust design, the KTEG OQR ensures that the machine's performance class is maintained when used with KTEG 360° attachments - no need to choose a smaller attachment size, as is often the case.

### NO DAILY MAINTENANCE REQUIRED

No need for daily greasing of the rotary drive - the components operate inside a sealed oil bath.

### HIGHEST SAFETY STANDARD

The locking indicator and safety hooks prevent incorrect operation and minimise accident risks. Complies with all common safety regulations.

### Quick coupler generations

	Current status: compact equipment				
	EXCAVATOR	1st generation	2nd generation	TOOL CARRIER	MULTI TOOL CARRIER
	Direct attachment Digging only	Mechanical	Hydraulic	3rd generation Fully hydraulic	4th generation Fully hydraulic with 360° rotation
Bucket change	10 min	2 min	10 s	10 s	10 s
Hydraulic attachment change	20 min	10 min	8 min	10 s	10 s
Added value: all attachments are 360° rotatable	No	No	No	No	Yes
Added value: rotary drive unit for attachments	No	No	No	No	Yes
System-compatible components/parts as standard	No	No	No	No	Yes
Protected hose routing in hazardous area as standard	No	No	No	No	Yes
Weight- and cost-optimised attachments	No	No	No	No	Yes
Wheel loader function	No	No	No	No	Yes
Forklift function	No	No	No	No	Yes



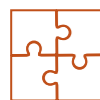
### IMPROVED MANOEUVRABILITY AND OPERATING RANGE

Decades of expertise in manufacturing tiltrotators, rotary drives and excavator equipment. The robust worm gear drive in the KTEG OQR enables work in all directions.



### GUARANTEED PRODUCTIVITY AND EFFICIENCY

The KTEG OQR is based on the proven OilQuick system, trusted for over 30 years. Mechanical and hydraulic locking takes place in a single step. The play-free connection to the attachment ensures a long service life without wear.



# 4. KTEG 360° attachments

## OPTIMISED FOR THE KTEG P-LINE SYSTEM - FULLY COMPATIBLE AND PLUG-AND-PLAY

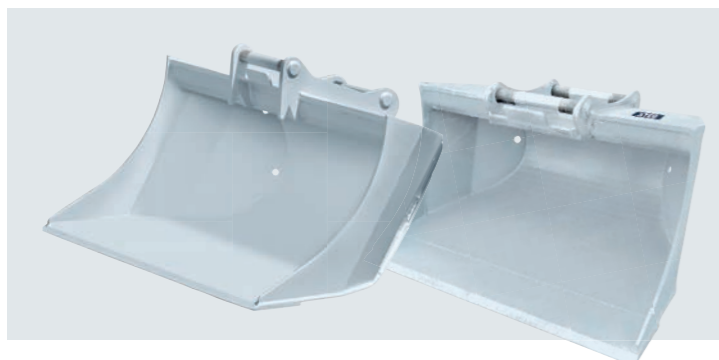
Thanks to its self-locking worm gear drive, the KTEG OQR can rotate any attachment - even those that were previously non-rotatable. This improves machine handling and extends its operating range.

Fully compatible - by eliminating external rotary drives and completely integrating the adapters into the attachment housing, the build height is reduced by 20 cm or more. This improves the centre of gravity, reduces wear and increases both precision and safety during operation.

Plug-and-play - all attachments can be connected within seconds. The hydraulic feed and all required connections are pre-installed and seamlessly integrated.



**Rotary drive removed and OQ adapter integrated into the housing - reducing build height and weight. No hoses in the hazardous area**



**Optimised installation height thanks to the recessed adapter frame, resulting in greater digging force and less machine stress.**



**Optimised pivot joint with integrated hose routing. No hoses in the hazardous area**



## KTEG TOOLBOX - THE IDEAL TRANSPORT AND STORAGE FRAME

A storage frame for attachments that can be picked up either on the excavator blade or with pallet forks.

- Daily time savings during site setup
- No downtime costs for lorries while loading and securing individual attachments
- No more misplaced attachments
- Easy handling in the yard

High-performance hydraulic attachments optimise on-site processes, ensuring the right tool is available for every application. Mounted on an excavator, they enable tasks to be completed up to 10 times faster and more efficiently than by hand.

Another advantage is that daily site setup costs are far lower than the labour costs of completing the same task by hand.



## Examples of site setup costs for a 5-tonne excavator attachment



€25 per day

€1 per day

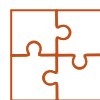
€13 per day

€8 per day

€7 per day

€13 per day

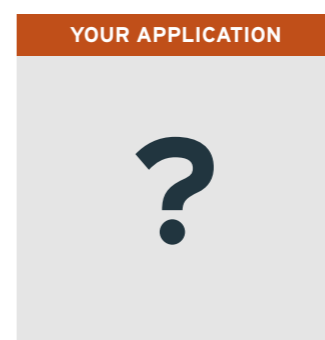
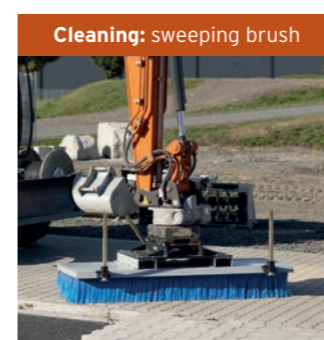
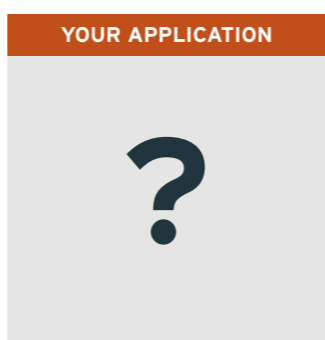
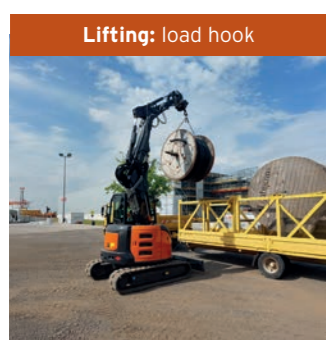
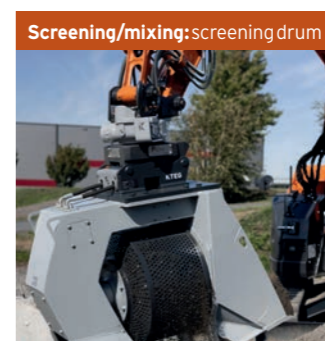
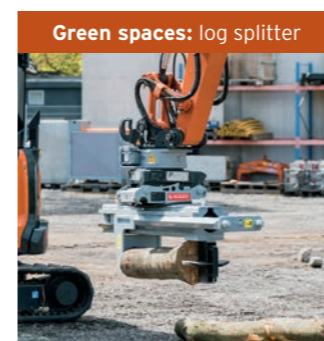
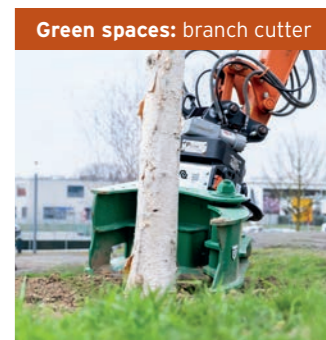
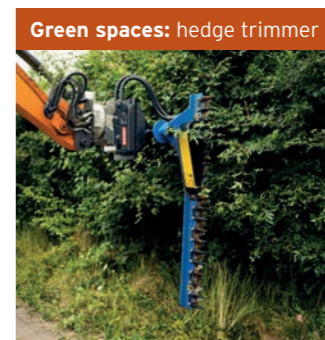
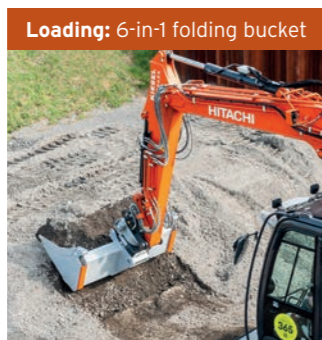
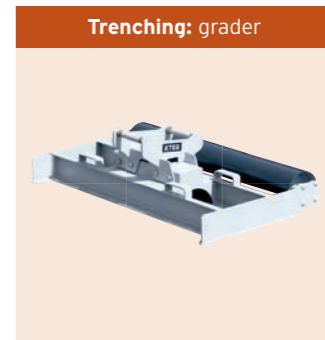
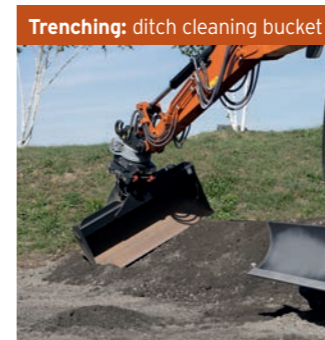
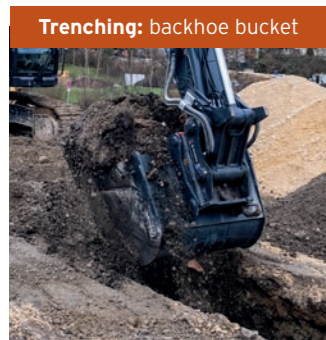
€2 per day

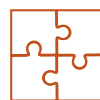


# KTEG 360° applications

- NETWORK CONSTRUCTION | CABLE INSTALLATION | ELECTRICAL WORK
- TELECOMMUNICATIONS | BROADBAND
- CIVIL ENGINEERING | PIPELINE CONSTRUCTION | WATER & SEWERAGE

- GARDENING AND LANDSCAPING
- MAINTENANCE OF GREEN SPACES
- MUNICIPAL WORKS / APPLICATIONS

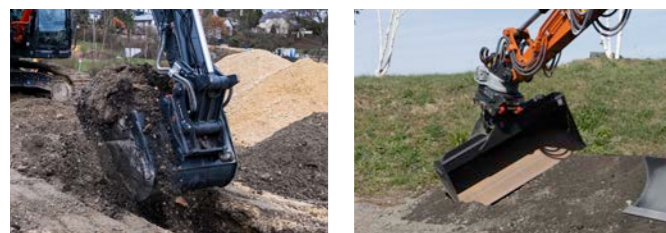




# KTEG 360° trenching

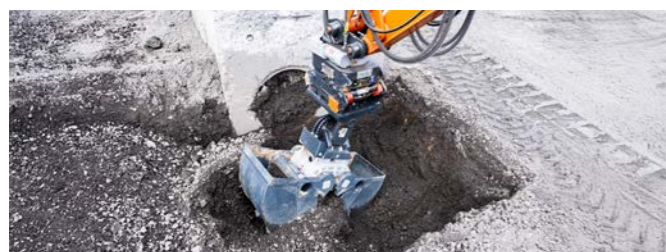
## KTEG 360° BUCKET

Trenching and excavation in any direction. Bucket rotation - instead of a swing boom - allows every type of digging operation to be performed.



## KTEG 360° CLAMSHELL GRAB

Trenching is possible in any position - where manual digging would otherwise be required. Enables vertical trenching that is not possible with conventional buckets, as well as trenching over obstacles.



## YOUR BENEFITS

### Maximum operating radius

Improved manoeuvrability thanks to 360° functionality

### Greater productivity

Work in all directions with less need to reposition the excavator

### Faster backfilling

Push material back into the trench by rotating the bucket 90° to the left or right

### Tiltrotator "light"

In combination with tilt buckets, even 3D applications can be carried out with ease

## KTEG 360° MULTI-SUCTION BOX

WORLD FIRST - gentle excavation and material removal, even on sensitive surfaces such as pipes, cables or tree roots. The excavated material is vacuumed into the housing and simply tipped out again via a flap.



## YOUR BENEFITS

### Minimises site downtime

Flooded trenches can be drained immediately

### No additional equipment required

Operates using the excavator's hydraulics - no high-voltage connection or generator required

### Work without additional personnel

Perform gentle excavation around power cables with the excavator instead of by hand

### Also suitable for cohesive material

Oscillating suction tube gently loosens the excavated material

## YOUR BENEFITS

### A true alternative to manual digging

Dig in any direction, at any point within the excavator's reach

### Works where conventional excavators can't dig

Vertical trenching - even over obstacles

### No risk of damage

All hydraulic hoses are integrated into the tilt-pivot joint

### No daily maintenance required

The proven cylinder-free HPX technology requires no daily lubrication

## KTEG 360° MILLING CUTTER ATTACHMENT

For asphalt and hard or compacted ground: the milling attachment breaks up material that a backhoe bucket cannot penetrate. At the same time, the milled material is reduced to gravel size, making it suitable for backfilling.



## YOUR BENEFITS

### Effective time savings

Loosens and crushes in a single operation - the milled material can be reused immediately

### Optimal trenching process

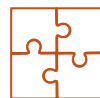
No rework required, as trench walls are cut precisely and smoothly on the first pass

### Ideal for built-up areas

The milling attachment produces no self-generated noise and significantly reduces noise emissions on site

### Versatile

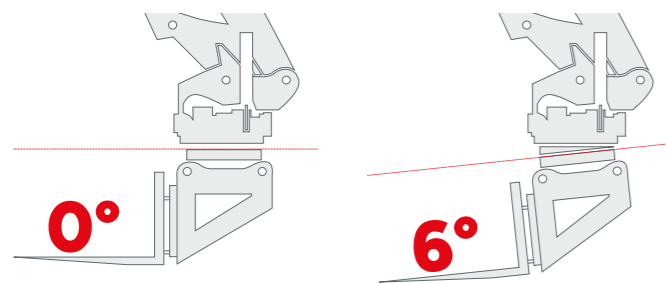
If required, a wood-cutting wheel can be fitted to remove tree stumps



# KTEG 360° loading

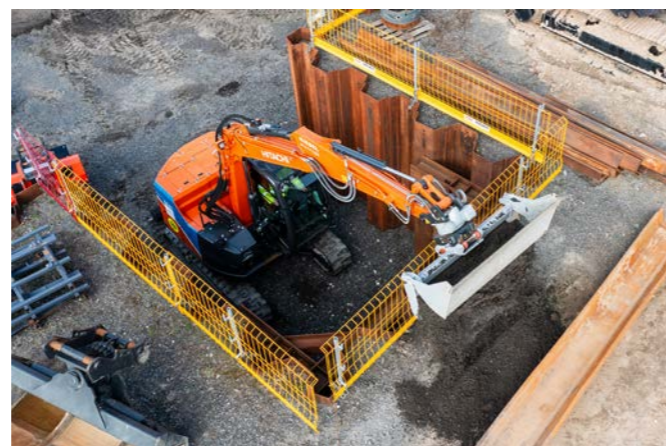
## KTEG 360° 6-IN-1 FOLDING BUCKET

A Hitachi/KTEG MTC equipped with the KTEG 360° folding bucket can outperform a compact wheel loader in almost every respect - except for travelling longer distances. This makes all above-ground loading processes significantly faster and more cost-effective than with conventional work equipment, while also eliminating the need for additional, often under-used standby machines - reducing "idle" costs.



### LOAD LIKE A WHEEL LOADER

Material is picked up from below, keeping the heap intact. No time is lost through unnecessary reworking.



### HIGH DUMP HEIGHT

Ideal for loading large transport vehicles - significantly greater dump height than in backhoe bucket mode.

## YOUR BENEFITS

### Up to 3x faster loading

With shorter idle times for the transport vehicles being loaded

### Up to 3x less rework

"Clean up" using the bucket grab's gripper function

### Precise backfilling

Controlled discharge via the bucket in any position - even where a wheel loader cannot reach

### Emptying and tipping over obstacles

### High dump height

Load large vehicles with a compact carrier machine

### Maximum reach and operating range

With 360° functionality for grading with the blade

### Work in confined spaces

No manoeuvring area required, unlike with wheel loaders



### GRABBING AND CLEANING

The clam action of the 6-in-1 bucket allows it to grip objects and collect residual material - this is significantly faster and more efficient than using a backhoe bucket.



### PUSHING AND GRADING

The integrated blade can be used as a 360° dozer or grading blade.



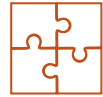
### ADDED VALUE: 360° BACKFILLING

Impossible for a wheel loader: emptying and precise backfilling in any position - even over obstacles - with fine control.



### ADDED VALUE: OFFSET FUNCTION

Something else a wheel loader cannot do: loading, grabbing and grading even outside the machine's conventional travel direction.



# KTEG 360° lifting and stacking

## KTEG 360° CRANE PALLET FORKS

Simple, intuitive operation - even for inexperienced operators. The fork tines are always in view, and the load centre is positioned beneath the arm.



### YOUR BENEFITS

#### Easy operation

The fork tines are clearly visible in any position

#### Maximum safety and support

The KTEG OQR "spirit level" warns the operator of unsafe situations

#### Greater operating range than a forklift

No manoeuvring required - pick up and set down loads over obstacles

#### No additional personnel required

Hydraulically adjustable fork tines

## KTEG 360° FORKLIFT PALLET FORKS

Safe lifting and transport of palletised goods. With 360° rotation, no manoeuvring space is required - unlike with wheel loaders.



### YOUR BENEFITS

#### Maximum safety and support

The KTEG OQR "spirit level" warns the operator of unsafe situations

#### Greater operating range than a forklift

No manoeuvring required - pick up and set down loads over obstacles

#### No additional personnel required

Hydraulically adjustable fork tines

## KTEG 360° LOAD HOOK

The safest load hook - rotatable by 360° in any position: remains outside the hazardous area and is always clearly visible.

**Mechanical:** simple and robust lifting device

**Hydraulic:** ideal for big bags - no additional personnel in the hazardous area when uncoupling the load.



### YOUR BENEFITS

#### The safest load hook

Central load position - clearly visible and easy for the operator to control

#### Prevents load swings or chain tensioning

At all times, the rotary drive can counteract potential hazards

#### Hydraulic version

No additional personnel are required to unhook the load

## KTEG 360° VACUUM LIFTER

Pick up, position and set down stones, kerbs or pipes without additional personnel. Work from the comfort of the cab with minimal exertion, reducing strain and safeguarding health.



### YOUR BENEFITS

#### Protects health

No physically strenuous lifting or carrying

#### No additional personnel required

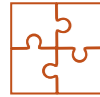
Pick up, position and place stones or slabs from the cab

#### Versatile

Suction plates can be changed quickly and easily on site

#### Easy operation

The load remains permanently vertical and is positioned using the KTEG OQR



# KTEG 360° lifting and grabbing

## KTEG 360° UNIVERSAL GRAB

Allows gripping and lifting of a wide variety of objects on any site - from pipes and stones to brushwood. The grab does not require its own rotary drive, as this is already integrated into the KTEG OQR.



## KTEG 360° FINGER GRAB

Extremely precise gripping, even of objects with a small diameter. The fingers interlock to securely enclose the material, functioning much like tweezers.



## YOUR BENEFITS

### Replaces manual work

Heavy and bulky objects can be picked up and positioned easily and effortlessly

### Zero daily maintenance

HPX shell drive - no daily lubrication required

### Cost-efficient

No rotary drive is needed, as it is already integrated into the KTEG OQR

### Saves time, reduces transport and disposal costs

Sorting takes place directly on site - no intermediate storage required

## YOUR BENEFITS

### Extremely sensitive and precise

The slim fingers securely grip even small objects

### Versatile and easy to use

The fingers interlock and can pick up even small-diameter bars, branches or trunks

### Safe

The grab module is always clearly visible and can be positioned as required with the KTEG OQR



# KTEG 360° compacting



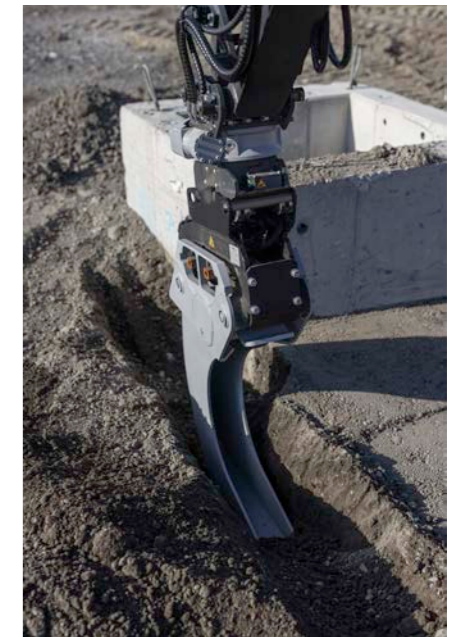
## KTEG 360° TRENCH COMPACTOR AND PIPE ZONE COMPACTOR

With their narrow base plate, these units are ideal for compacting trenches up to 30 cm wide. They are also perfect for compacting the pipe zone, where a hand-operated trench rammer would normally be used.



## KTEG 360° PLATE COMPACTOR

Maximum compaction performance for large-area compaction work with a wide base plate. Plate compactors deliver a high impact force that hand-operated vibratory plates cannot match.



## KTEG 360° CABLE COMPACTOR BUCKET

For even greater compaction speed - the multifunction attachment backfills and compacts in one step. Its narrow design meets common utility company specifications and allows it to work in trenches as narrow as 13 cm.

## YOUR BENEFITS

### Up to 10 times faster than compaction with handheld equipment

Excavator-mounted compactors can be easily integrated into the trench filling and compaction process without interrupting the work

### Cost-efficient

No additional personnel required

### Safe

No people in the hazardous area

### Protects health

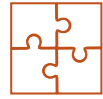
No physically strenuous work or exposure to vibration

### High compaction quality

Excavator-mounted compactors can compact thicker layers than manually operated work equipment

### Controlled compaction

The self-locking worm gear drive in the KTEG OQR keeps the compactor steady, even in soil that is difficult to compact



# KTEG 360° cleaning, screening and mixing

## KTEG 360° SWEEPING BRUSH AND ROTARY SWEEPER

Site cleaning made quick and easy - the wide brushes clear large areas of coarse debris in no time. In the first step of sand spreading, the push broom distributes the material much faster and more efficiently than is possible by hand.



### YOUR BENEFITS

#### 10 times faster than manual sweeping

Wide sweeping brushes and rotary sweepers work up to ten times faster than manual sweeping - all in a single pass

#### More efficient use of personnel

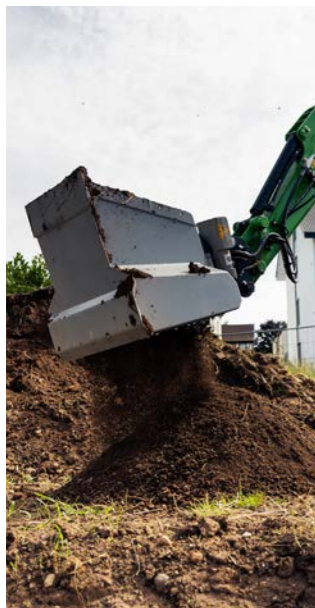
No additional personnel required. Working time can be used more efficiently - for construction work rather than cleaning tasks

#### Cleaning hard-to-reach areas

With the rotation of the KTEG OQR, sweeping brushes and rotary sweepers can clean in all areas - even lorry loading beds or inside containers

## KTEG 360° BUCKET SEPARATORS AND SIEVES

Producing high-quality soil and construction materials directly on site is far more efficient and cost-effective than sourcing new material. It also reduces the volume of material requiring disposal.



### YOUR BENEFITS

#### Lower disposal costs

Only contaminants are removed

#### Reduced transport costs

Less material to remove and less need to source fresh material

#### High-quality material

Screening to the required grain size delivers high-quality results

#### Superior compaction results

Mixing lime into wet soil improves its compaction properties



# KTEG 360° maintenance of green spaces



## KTEG 360° ROTARY TILLER

Loosens and aerates soil in preparation for planting or for general soil improvement.

## KTEG 360° MULCHERS

Cuts grass or shreds vegetation - KTEG 360° mulchers are available for excavators with an operating weight from 2 tonnes upwards.

## KTEG 360° BRANCH CUTTER AND HEDGE TRIMMER

Fast, safe cutting of hedges and brushwood in all positions and directions.

### YOUR BENEFITS

#### 10 times faster than manual work

Significantly more power, enabling faster mulching, hedge cutting or soil aeration than manual methods

#### Safe

No hazardous working positions, no risk of falling from ladders or trees, and no safety personnel required

#### No strenuous, repetitive work

Fatigue-free operation with the Multi Tool Carrier

#### Large operating radius

The KTEG OQR's rotary function allows mulchers, rotary tillers and hedge trimmers to make full use of the carrier's operating radius

APPLICATIONS

- Trenching/excavating
- Loading
- Lifting/grabbing
- Transport
  
- Backfilling
- Levelling
- Profiling / shaping
- Milling
- Breaking
- Compacting
- Screening
- Cutting
- Drilling
- Piling
- Cleaning
- Sweeping
- Paving
- Sanding
- Mixing
- Crushing
- Aerating
- Loosening
- Topsoiling
- Vacuuming
- Planting
- Clearing
- Mulching
- Weeding
- \_\_\_\_\_
- \_\_\_\_\_
- \_\_\_\_\_
- \_\_\_\_\_

ATTACHMENTS

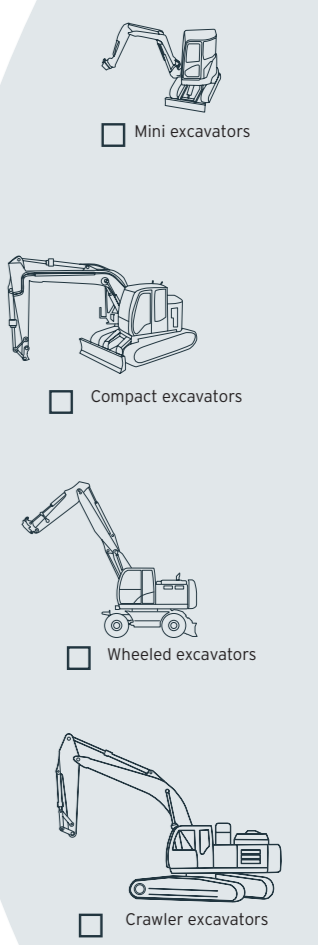
**OUR SERVICES**

- COREUM: experience our machines live and put them to the test - all year round
- Coreum Academy: User training based on real-world experience
- Kiesel Comprehensive rental fleet
- Kiesel Extensive service network
- Kiesel 24/7 parts and accessories in the online shop
- Custom solutions

QUICK-COUPLER SYSTEMS



TOOL CARRIERS



DIGITAL ASSISTANCE SYSTEMS



# About KTEG

## We think and act in terms of holistic system solutions

Our team has been developing and manufacturing specialised solutions for over 20 years - tailored to the unique characteristics of each industry. We address new and recurring challenges by developing comprehensive system solutions across seven business segments. Our vision is to be the leading innovator for key machines and technologies on the construction site.

### HITACHI AND KTEG

The groundbreaking joint venture between Hitachi Construction Machinery and KTEG combines the best of two worlds: the reliable machines and comprehensive expertise of Hitachi and the agility and market proximity of KTEG. Together, we set new benchmarks in the industry.



### BRINGING TOGETHER THE BEST OF TWO WORLDS.

#### KTEG ...

- is Hitachi's European research and development centre.
- is used as a secondary brand alongside Hitachi.
- can implement customer requirements in physical and digital form within a short time.
- focuses on progressive customers who seek innovative, highly developed technology solutions that give them a competitive edge.



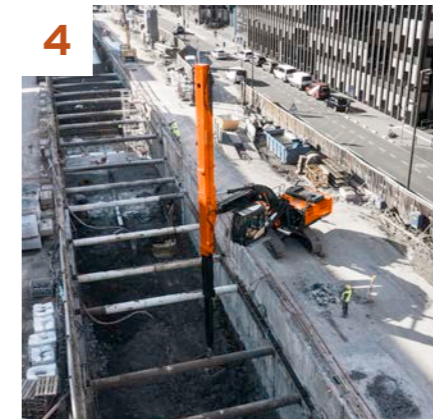
1 Research and development



2 Machines for the construction, material handling and compact equipment industries



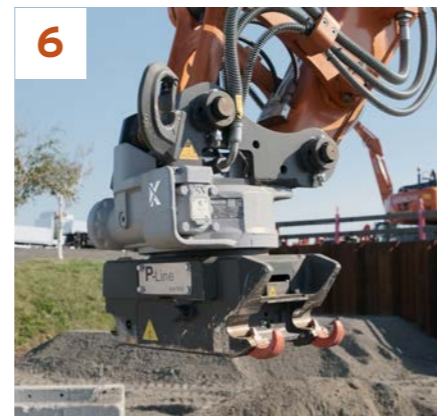
3 System solutions for zero emissions



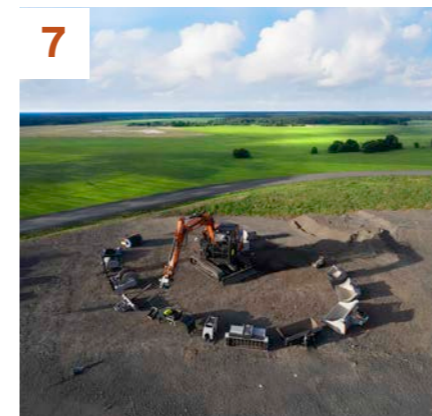
4 Custom solutions for the construction, material handling and compact equipment industries



5 Digital assistance systems



6 Quick-coupler systems



7 Attachments

### P-LINE

The assistance systems, quick-coupler systems and attachments can be combined with a pre-configured Multi Tool Carrier to create a fully integrated system solution: the KTEG P-Line.

### 360° VIEW AND A FOCUS ON THE CUSTOMER

With our expertise in product marketing, development, production, sales and service, we have a comprehensive understanding of our customers' needs and demonstrate our expertise throughout the entire product life cycle.

### YOUR DEALER NETWORK

KTEG system solutions for sales, rental and service are available from Kiesel in Germany and Austria.

More than 40 dealers in over 25 countries sell KTEG machine and system solutions.



Find your dealer now!

## YOUR DEALER NETWORK

More than 40 dealers in over 25 countries  
sell KTEG machine and system solutions.



Find your dealer now!

**KTEG GmbH**  
**Kenki Technology Group**  
Helmut-Kiesel-Strasse 2  
64589 Stockstadt am Rhein, Germany

+49 751 50 04 0  
info@kteg-company.com

