

KMC 380S-7

KTEG



Engine

Engine model: Isuzu 6HK1X
Net Power – ISO14396:
210 kW (282 hp)

Weight

Operating weight including
demolition front:
approximately 50.000 kg

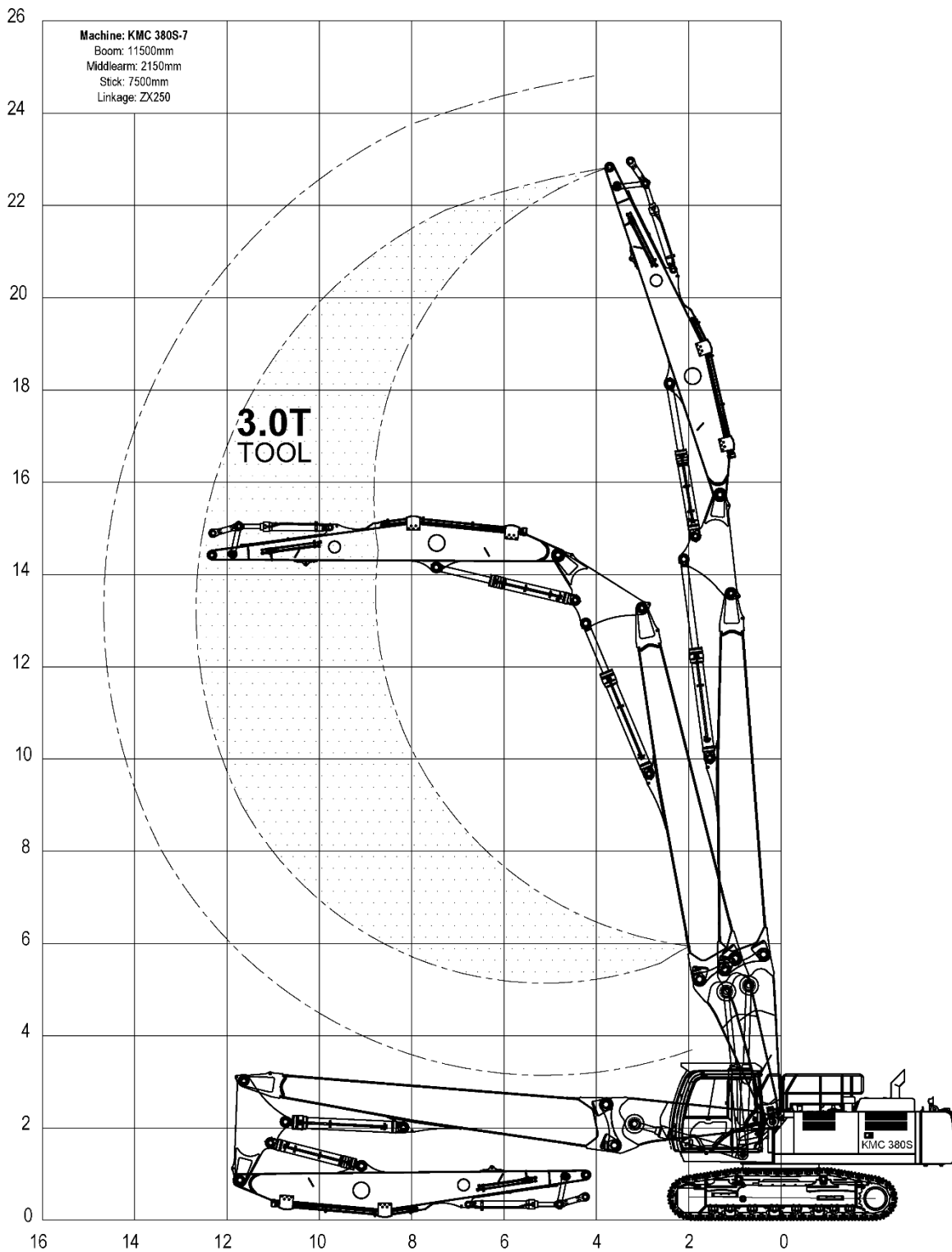
Working height

Maximum pin height:
23 meters
Maximum safe working height:
20.5 meters

Demolition front

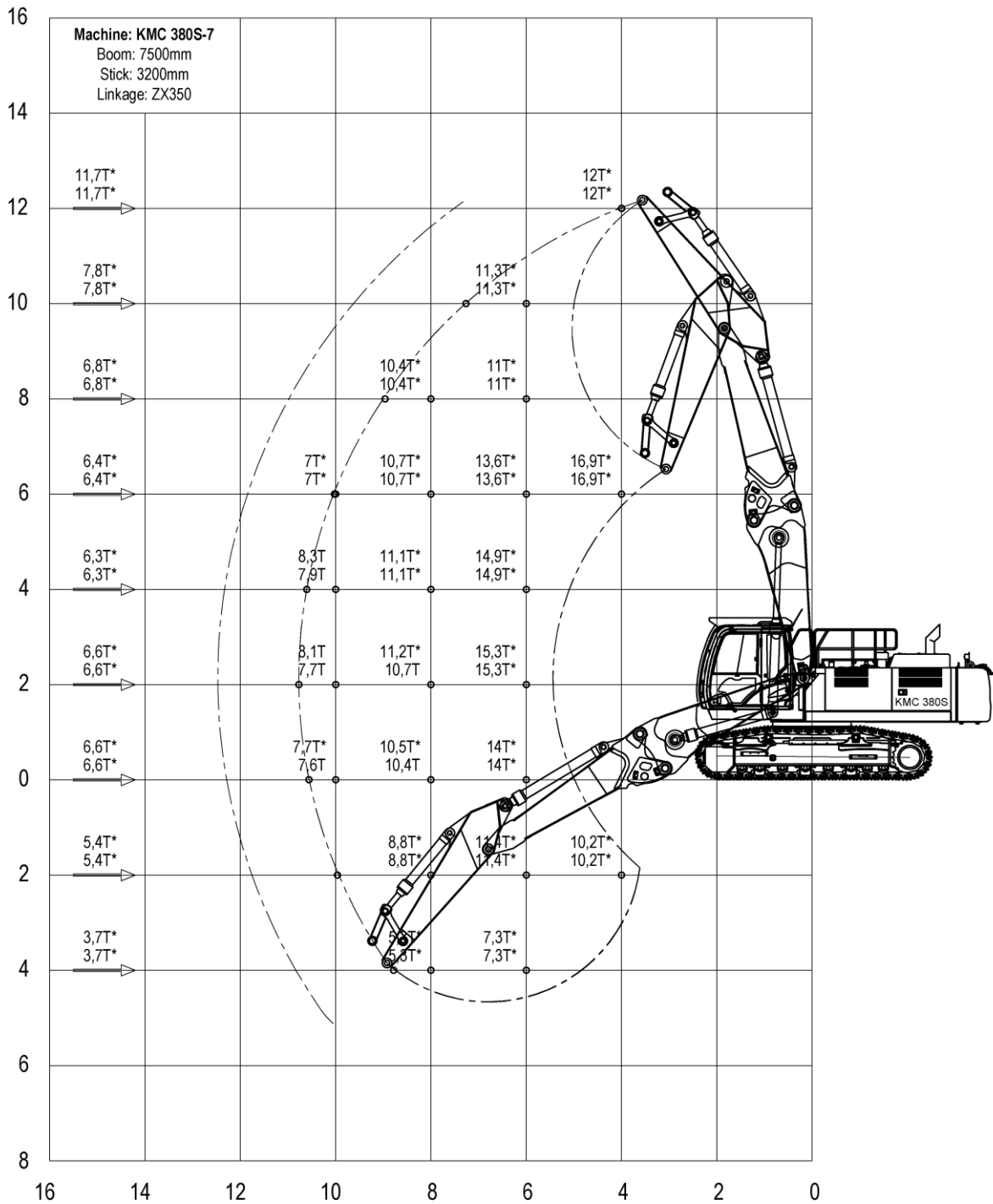
KTEG

Pin height 23 meters



Straight Boom

KTEG



Preliminary

Configuration: Base machine with extendable undercarriage.

The upper number indicates the maximum load over the front, the lower number over the side.

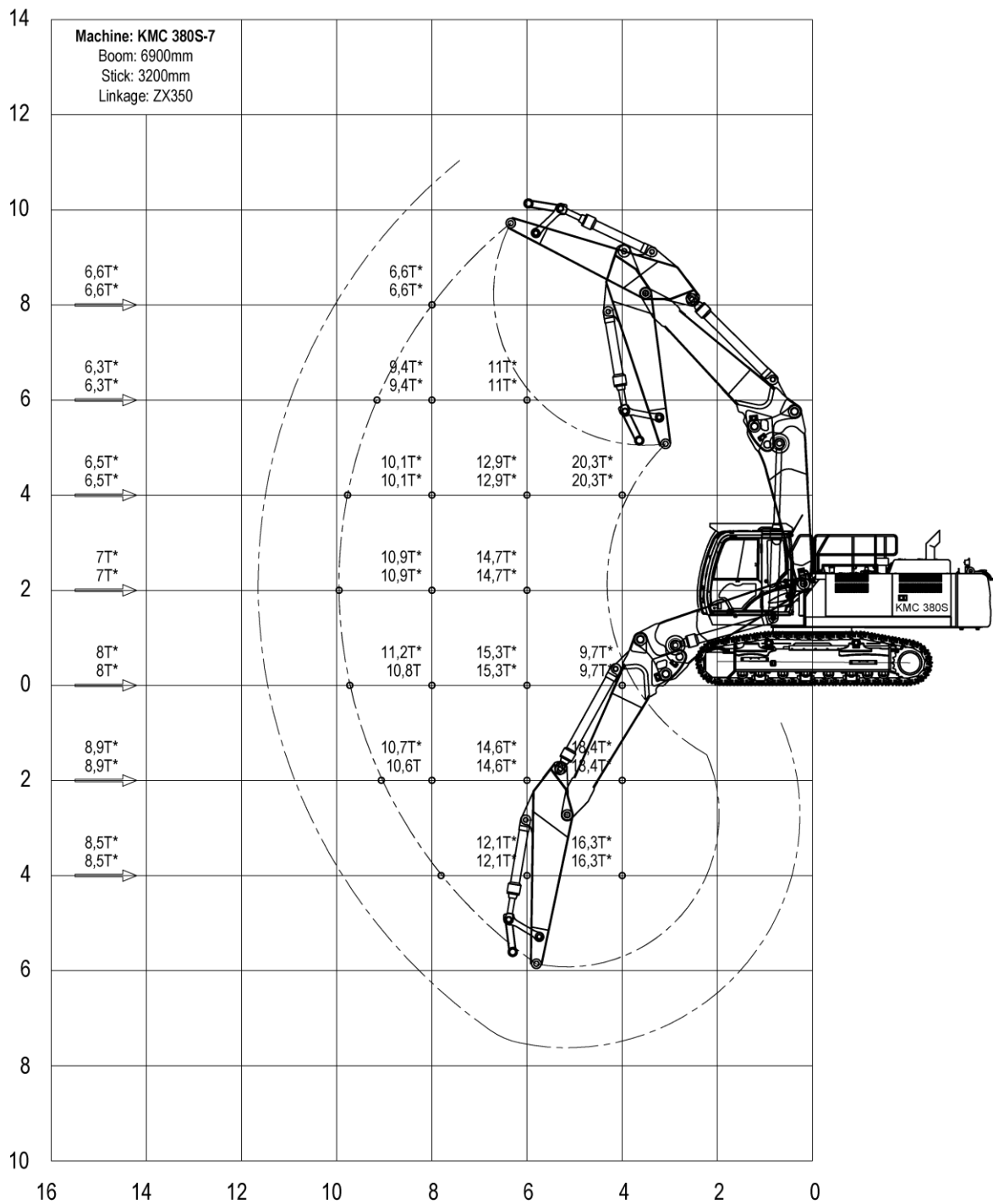
The numbers with a * indicates 87% of the hydraulic capacity, the remaining numbers 75% of the tipping load.

The left column shows the load at max. reach of the machine.

The above loads are in compliance with ISO 10567 hydraulic excavator lift capacity standard. Weight of all lifting accessories must be deducted from the above lifting capacities. The use of a work tool attachment point to handle/lift objects, could affect the machine lift performance. Lifting capacities are based on the machine standing on a firm, uniform supporting surface. Specifications are subject to change without notice.

Bent Boom

KTEG

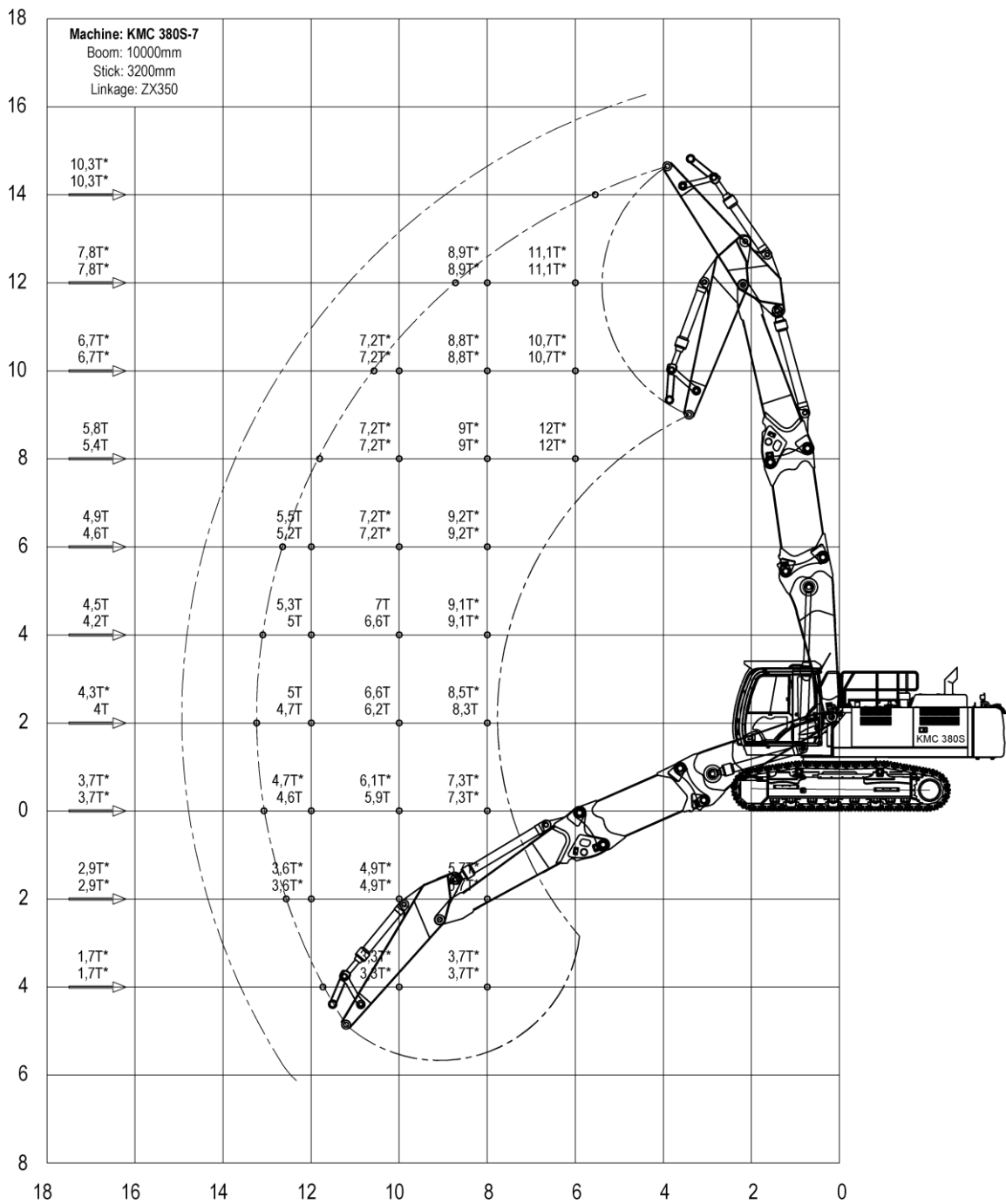


Preliminary

Configuration: Base machine with extendable undercarriage.
 The upper number indicates the maximum load over the front, the lower number over the side.
 The numbers with a * indicates 87% of the hydraulic capacity, the remaining numbers 75% of the tipping load.
 The left column shows the load at max. reach of the machine.
 The above loads are in compliance with ISO 10567 hydraulic excavator lift capacity standard. Weight of all lifting accessories must be deducted from the above lifting capacities. The use of a work tool attachment point to handle/lift objects, could affect the machine lift performance. Lifting capacities are based on the machine standing on a firm, uniform supporting surface. Specifications are subject to change without notice.

Straight Boom + Ext.

KTEG



Preliminary

Configuration: Base machine with extendable undercarriage.

The upper number indicates the maximum load over the front, the lower number over the side.

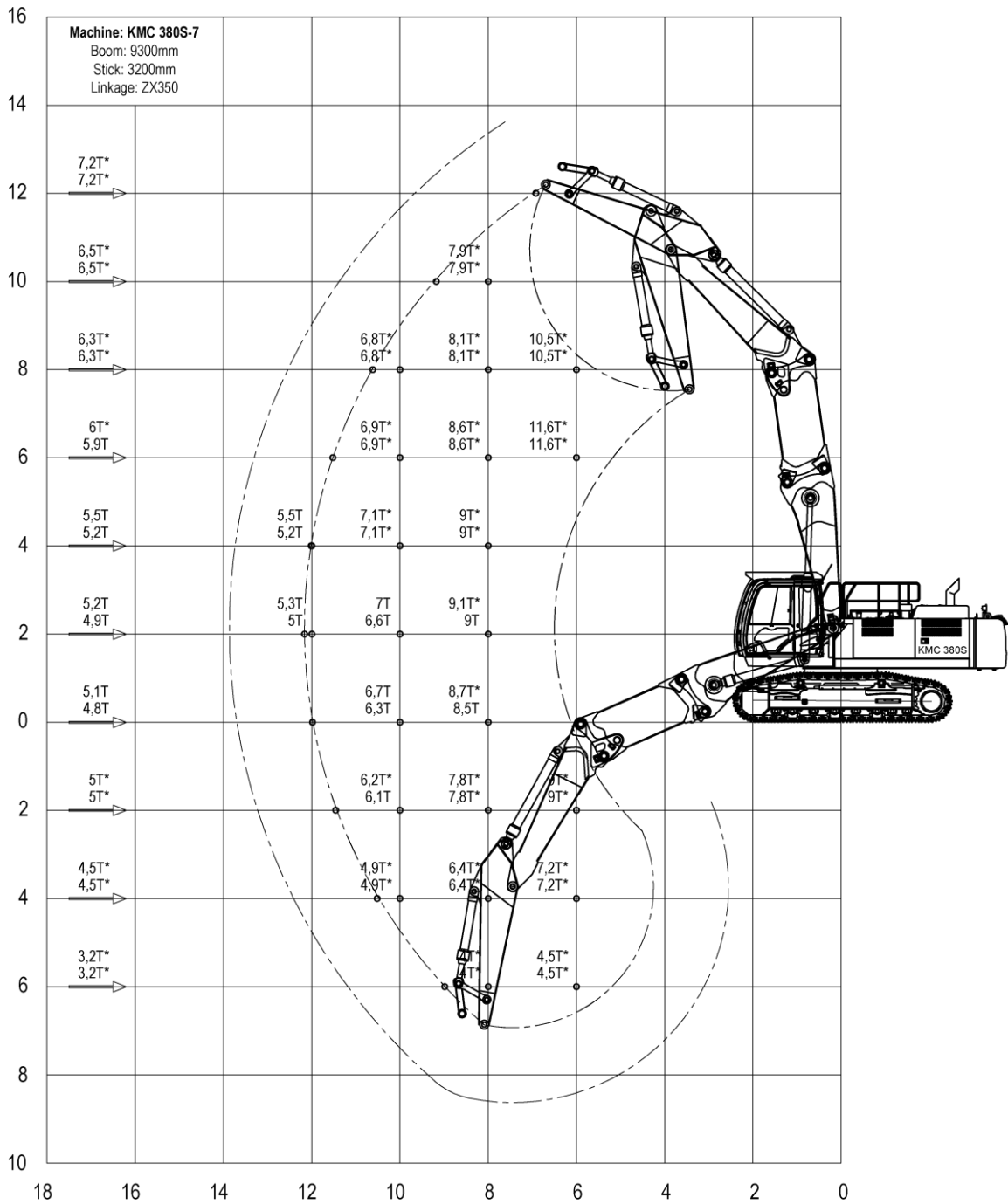
The numbers with a * indicates 87% of the hydraulic capacity, the remaining numbers 75% of the tipping load.

The left column shows the load at max. reach of the machine.

The above loads are in compliance with ISO 10567 hydraulic excavator lift capacity standard. Weight of all lifting accessories must be deducted from the above lifting capacities. The use of a work tool attachment point to handle/lift objects, could affect the machine lift performance. Lifting capacities are based on the machine standing on a firm, uniform supporting surface. Specifications are subject to change without notice.

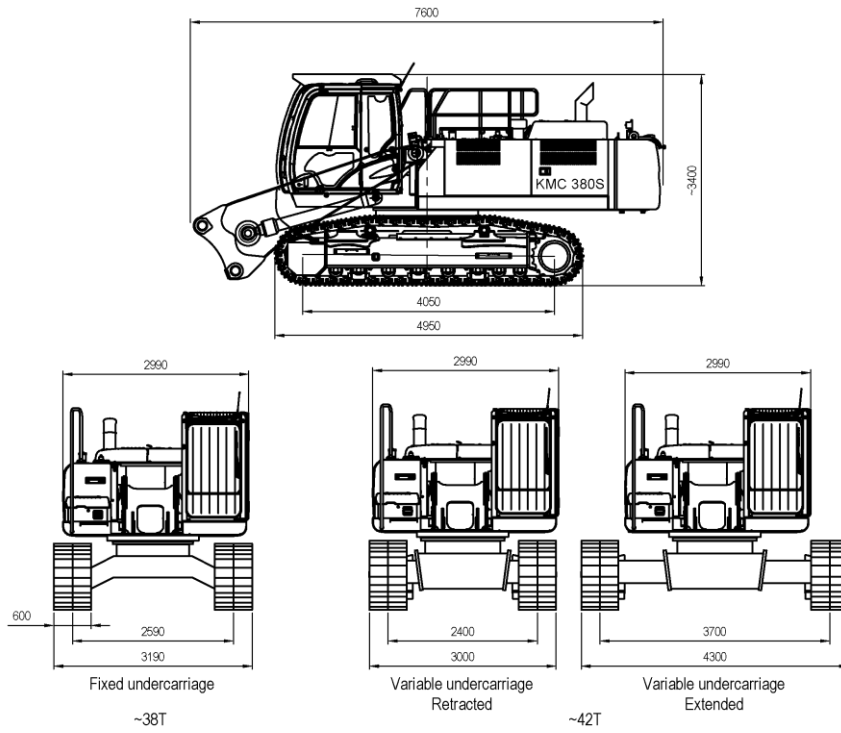
Bent Boom + Ext.

KTEG

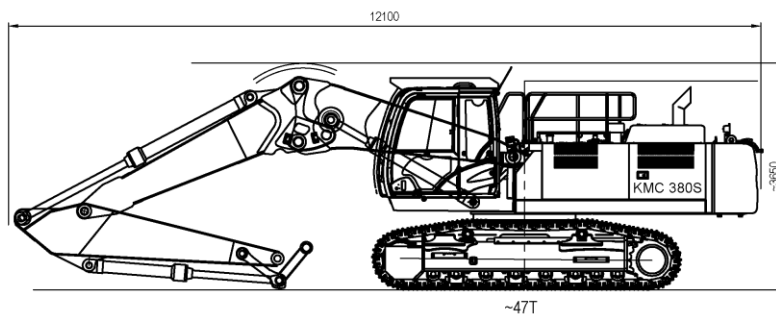
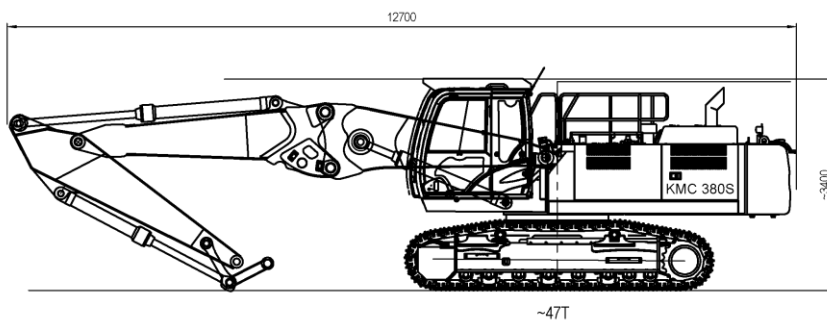
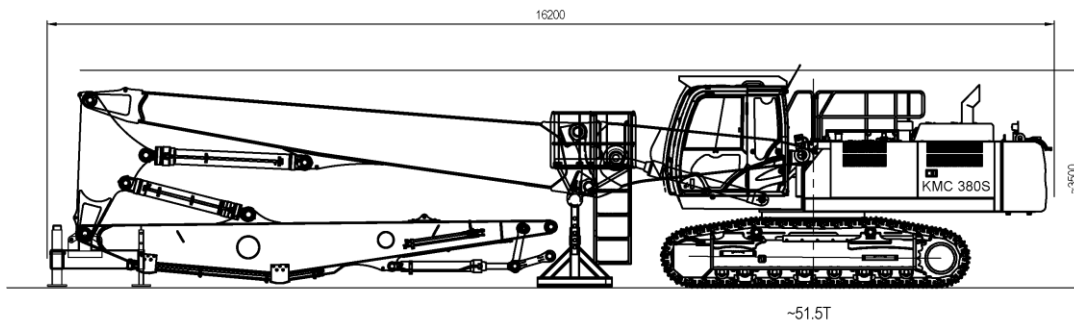


Preliminary

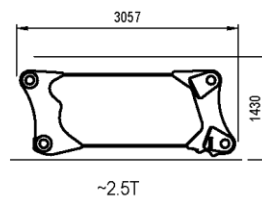
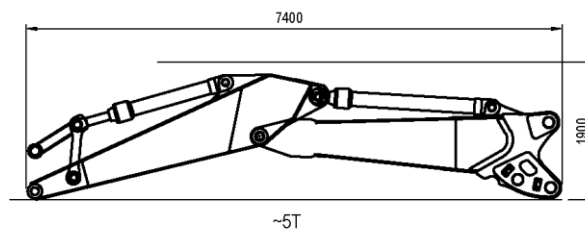
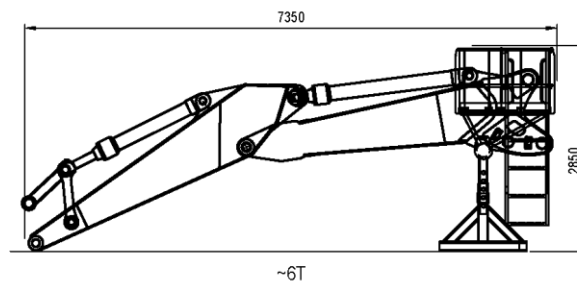
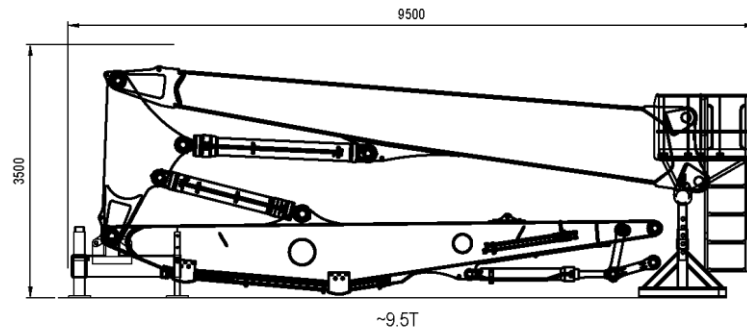
Configuration: Base machine with extendable undercarriage.
 The upper number indicates the maximum load over the front, the lower number over the side.
 The numbers with a * indicates 87% of the hydraulic capacity, the remaining numbers 75% of the tipping load.
 The left column shows the load at max. reach of the machine.
 The above loads are in compliance with ISO 10567 hydraulic excavator lift capacity standard. Weight of all lifting accessories must be deducted from the above lifting capacities. The use of a work tool attachment point to handle/lift objects, could affect the machine lift performance. Lifting capacities are based on the machine standing on a firm, uniform supporting surface. Specifications are subject to change without notice.



All pictures and weights below are with the extendable undercarriage.



Preliminary



Preliminary